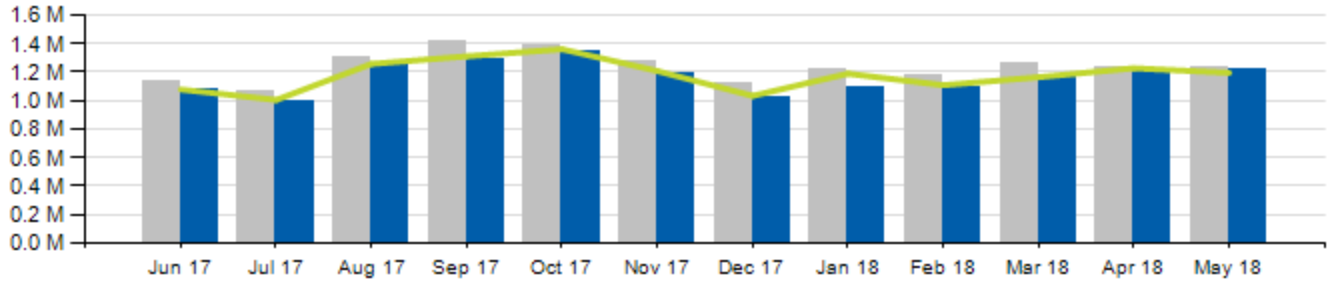




May 2018 Ridership Report

Local/Express Ridership

Total Ridership

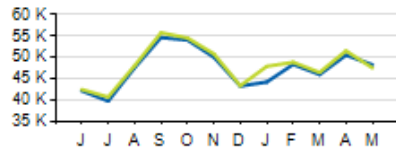


	ACTUAL	BUDGET	VARIANCE (% / #)		2017	VARIANCE (% / #)	
TOTAL	1,215,654	1,194,225	+1.8%	+21,429	1,226,494	-0.9%	-10,840
LOCAL	1,133,623	1,113,348	+1.8%	+20,275	1,143,764	-0.9%	-10,141
EXPRESS	82,031	80,877	+1.4%	+1,154	82,730	-0.8%	-699
YTD TOTAL	5,763,819	5,880,633	-2.0%	-116,814	6,110,553	-5.7%	-346,734

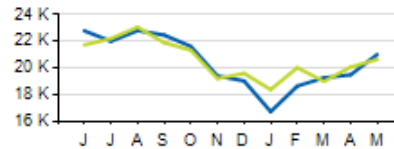


Local/Express KPIs

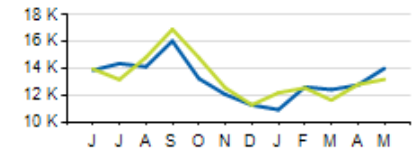
Average Fixed Ridership: Weekday



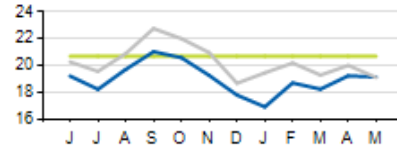
Average Fixed Ridership: Saturday



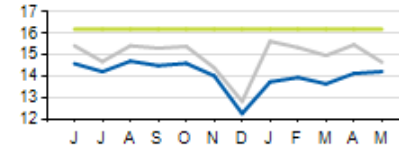
Average Fixed Ridership: Sunday



Passengers per Hour: Local



Passengers per Trip: Express



	ACTUAL	KPI/BUDGET	VARIANCE
PASSENGERS PER HOUR (LOCAL)	19.1	20.7	-1.6
PASSENGERS PER TRIP (EXPRESS)	14.2	16.2	-2.0
AVERAGE RIDERSHIP (WD)	48,250	47,528	+722
AVERAGE RIDERSHIP (SA)	21,021	20,655	+366
AVERAGE RIDERSHIP (SU)	14,015	13,194	+831



Current year



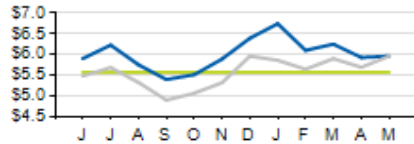
Prior year



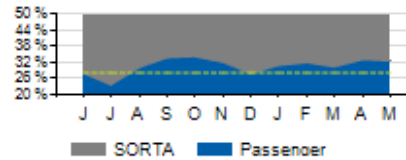
KPI/Budget

Local/Express KPIs

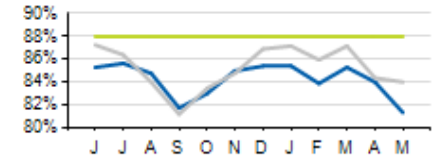
Cost per Passenger: Local



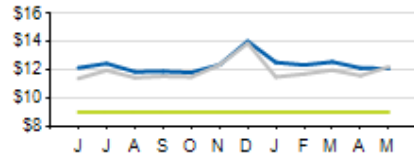
Service Cost Sharing: Local



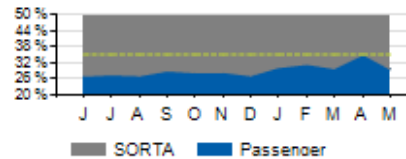
On-Time Performance: Local



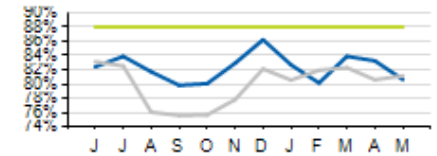
Cost per Passenger: Express



Service Cost Sharing: Express



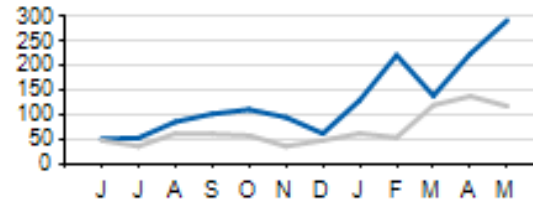
On-Time Performance: Express



	ACTUAL	KPI	VARIANCE
COST PER PASSENGER (LOCAL)	\$5.96	\$5.57	+\$0.39
COST PER PASSENGER (EXPRESS)	\$12.10	\$9.00	+\$3.10
COST RECOVERY (LOCAL)	32.5%	28.0%	+4.5%
COST RECOVERY (EXPRESS)	29.5%	35.0%	-5.5%
OTP (LOCAL)	81.3%	88.0%	-6.7%
OTP (EXPRESS)	80.6%	88.0%	-7.4%

Local/Express Missed Trips

Missed Trips



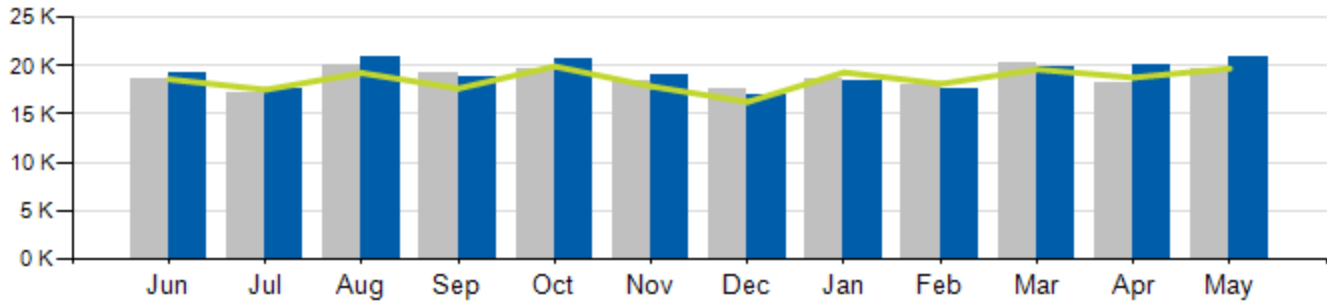
Current year Prior year

	ACTUAL	TOTAL TRIPS	% of Trips Operated
MISSSED TRIPS (ALL SERVICE)	291	65,725	99.9%

REASON FOR MISSED TRIP	ACTUAL	% of MISSED TRIPS
NO OPERATOR AVAILABLE	198	68.0%
MECHANICAL ISSUE	52	17.9%
TRAFFIC INCIDENT	15	5.2%
LATE OPERATIONS	17	5.8%
OTHER	9	3.1%

Access Ridership

Total Ridership

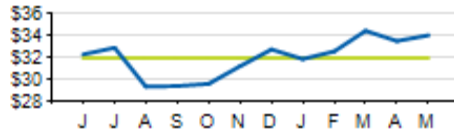


ACCESS PARATRANSIT	ACTUAL	BUDGET	VARIANCE (%/#)		2017	VARIANCE (%/#)	
TOTAL	20,836	19,706	+5.7%	1,130	19,706	+5.7%	+1,130
WD	19,390				18,385	+5.5%	+1,005
SA	763				690	+10.6%	+73
SU	683				631	+8.2%	+52
YTD	98,839	95,526	+3.5%	3,313	94,679	+4.4%	+4,160

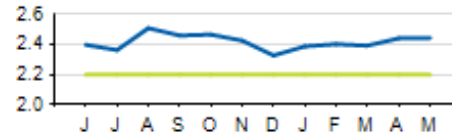


Access KPIs

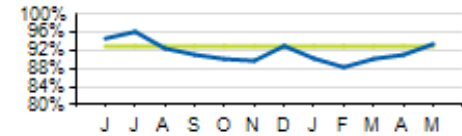
Cost per Passenger



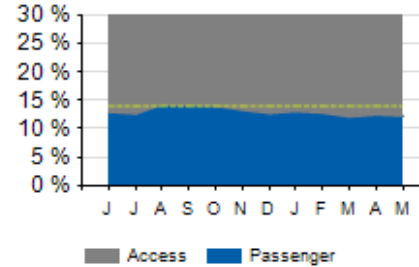
Passengers per Hour



On-Time Performance



Service Cost Sharing



	ACTUAL	KPI	VARIANCE
COST PER PASSENGER	\$34.07	\$32.00	+\$2.07
ON-TIME PERFORMANCE (OTP)	93.5%	93.0%	+0.5%
PASSENGERS PER HOUR	2.4	2.2	+0.2
COST RECOVERY	12.2%	14.0%	-1.8%



Current year



Prior year



KPI