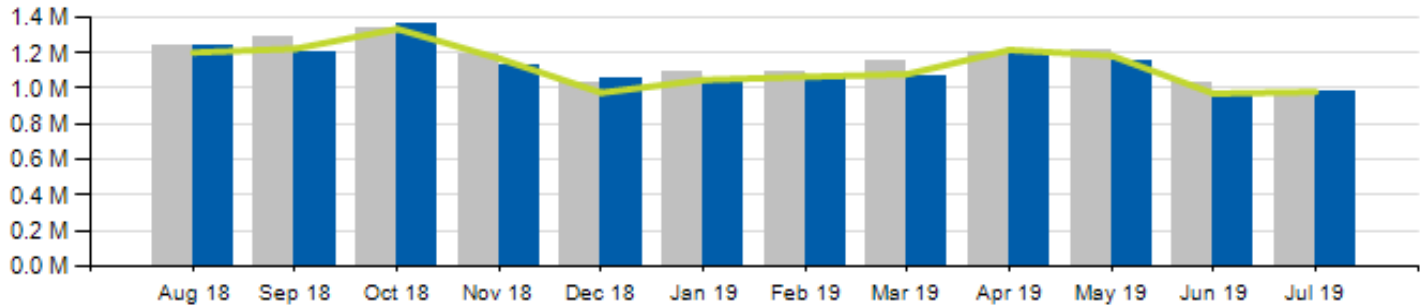


# July 2019 Ridership Report

# Local/Express Ridership

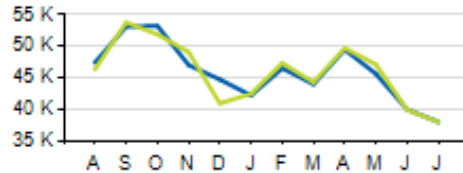
Total Ridership



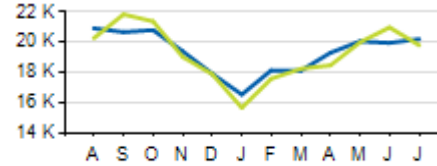
	ACTUAL	BUDGET	VARIANCE (%/#)		2018	VARIANCE (%/#)	
TOTAL	985,794	979,779	0.6%	6,015	985,707	0.0%	87
LOCAL	903,712	899,038	0.5%	4,674	905,485	-0.2%	-1,773
EXPRESS	82,082	80,741	1.7%	1,341	80,222	2.3%	1,860
YTD TOTAL	7,484,787	7,541,241	-0.7%	-56,454	7,773,855	-3.7%	-289,068

# Local/Express KPIs

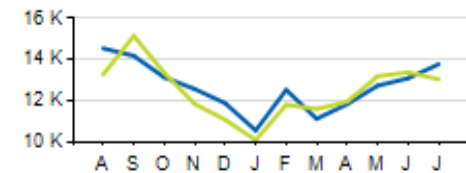
Average Fixed Ridership: Weekday



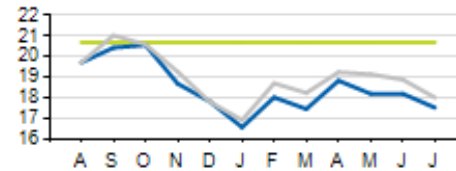
Average Fixed Ridership: Saturday



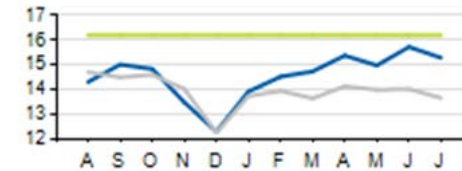
Average Fixed Ridership: Sunday



Passengers per Hour: Local



Passengers per Trip: Express



	ACTUAL	KPI/BUDGET	VARIANCE
PASSENGERS PER HOUR (LOCAL)	17.5	20.7	-3.2
PASSENGERS PER TRIP (EXPRESS)	15.3	16.2	-0.9
AVERAGE RIDERSHIP (WD)	38,001	37,967	+34
AVERAGE RIDERSHIP (SA)	20,219	19,810	+409
AVERAGE RIDERSHIP (SU)	13,778	13,053	+725



Current year



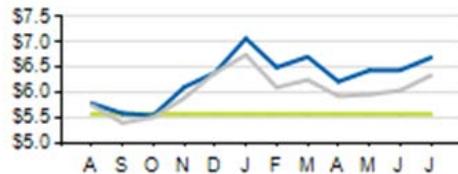
Prior year



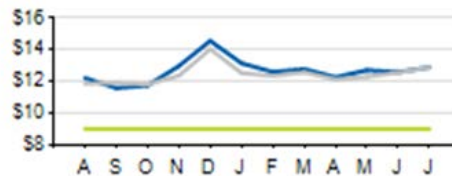
KPI/Budget

# Local/Express KPIs

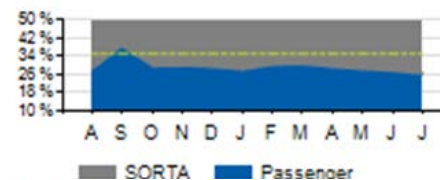
Cost per Passenger: Local



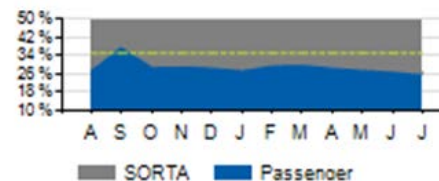
Cost per Passenger: Express



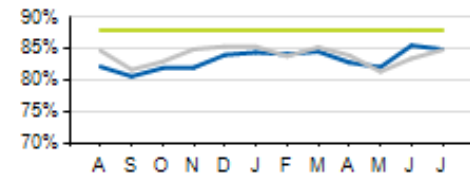
Service Cost Sharing: Express



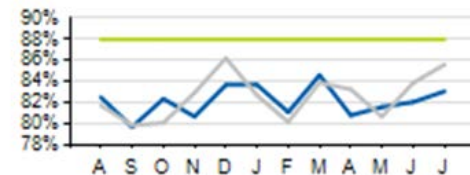
Service Cost Sharing: Express



On-Time Performance: Local



On-Time Performance: Express



	ACTUAL	KPI	VARIANCE
COST PER PASSENGER (LOCAL)	\$6.70	\$5.57	+\$1.13
COST PER PASSENGER (EXPRESS)	\$12.90	\$9.00	+\$3.9
COST RECOVERY (LOCAL)	21.7%	28.0%	-6.3%
COST RECOVERY (EXPRESS)	26.2%	35.0%	-8.8%
ON TIME PERFORMANCE (LOCAL)	84.7%	86.5%	-1.8%
ON TIME PERFORMANCE (EXPRESS)	83.1%	86.5%	-3.4%

Current year

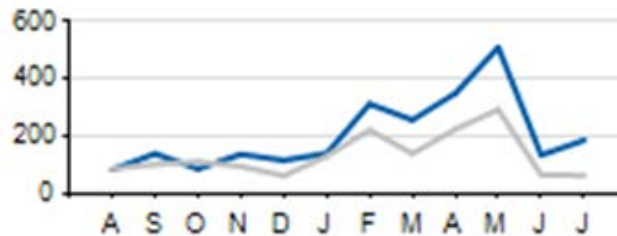
Prior year

KPI



# Local/Express Missed Trips

Missed Trips



Current year

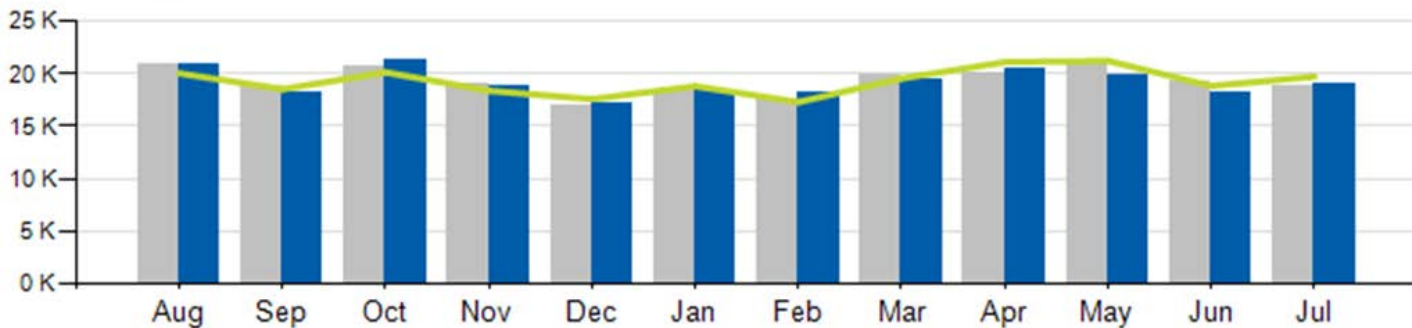
Prior year

	ACTUAL	TOTAL TRIPS	% OF TRIPS OPERATED
MISSSED TRIPS (ALL SERVICE)	186	59,878	99.7%

REASON FOR MISSED TRIP	ACTUAL	% of MISSED TRIPS
NO OPERATOR AVAILABLE	70	38.0%
MECHANICAL ISSUE	42	22.6%
TRAFFIC INCIDENT	35	18.8%
LATE OPERATIONS	20	10.8%
OTHER	19	10.2%

# Access Ridership

Total Ridership



ACCESS PARATRANSIT	ACTUAL	BUDGET	VARIANCE (%/#)		2018	VARIANCE (%/#)	
TOTAL	18,974	19,724	-3.8%	-750	18,709	1.4%	265
WD	17,824				17,187	3.7%	637
SA	583				724	-19.5%	-141
SU	567				798	-28.9%	-231
YTD	133,274	136,530	-2.4%	-3,256	134,715	-1.1%	-1,441



Current Year

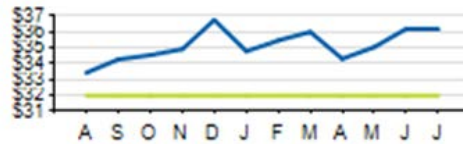


Prior Year

— Budget

# Access KPIs

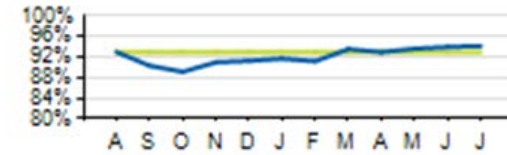
Cost per Passenger



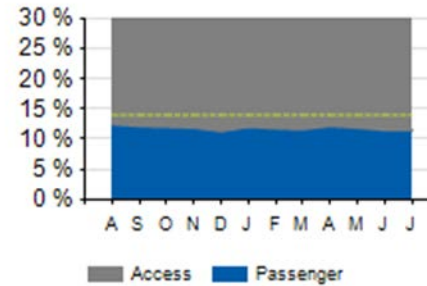
Passengers per Hour



On-Time Performance



Service Cost Sharing



	ACTUAL	KPI	VARIANCE
COST PER PASSENGER	\$36.18	\$32.00	+\$4.18
ON-TIME PERFORMANCE (OTP)	94.0%	93.0%	+1.0%
PASSENGERS PER HOUR	2.29	2.20	+0.09
COST RECOVERY	11.4%	14.0%	-2.6%

Current year KPI



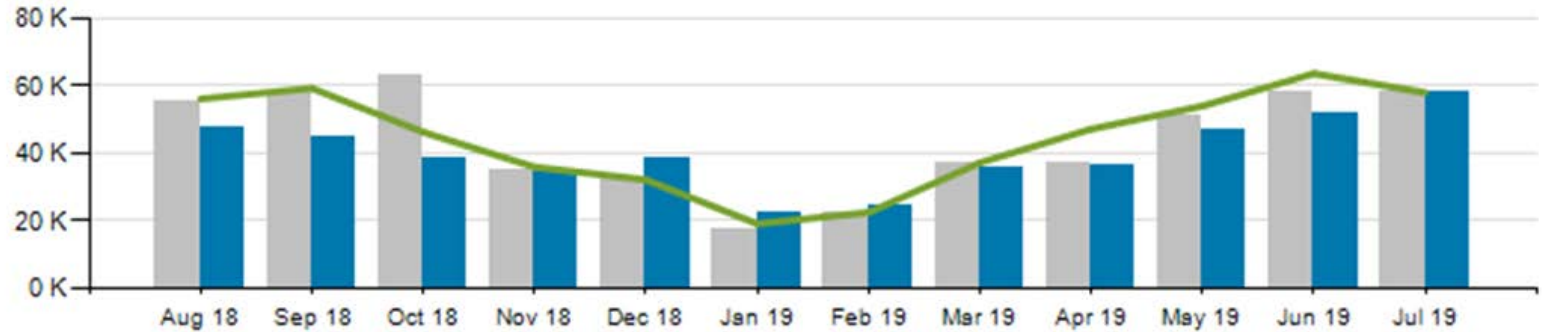
# Cincinnati Bell Connector





# CB Connector Ridership

Total Ridership

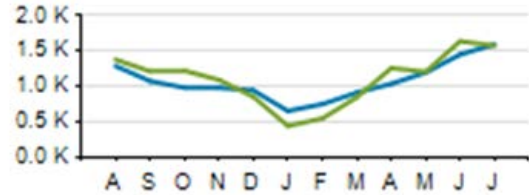


	ACTUAL	BUDGET	VARIANCE (%/#)		FY2018	VARIANCE (%/#)	
TOTAL	58,382	58,009	0.6%	373	58,428	-0.1%	-46
FYTD TOTAL	58,382	58,009	0.6%	373	58,428	-0.1%	-46

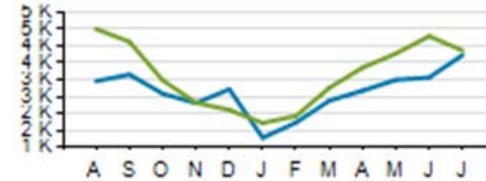
■ Current Year
 ■ Prior Year
 — Budget

# CB Connector KPIs

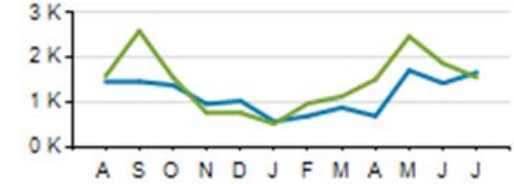
Average Ridership: Weekday



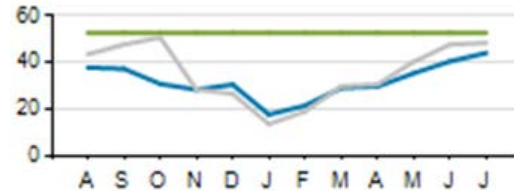
Average Ridership: Saturday



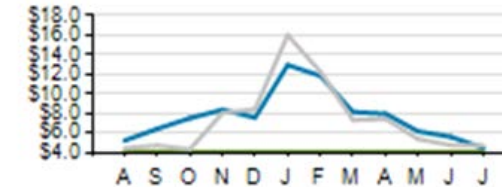
Average Ridership: Sunday



Passengers per Hour



Cost per Passenger

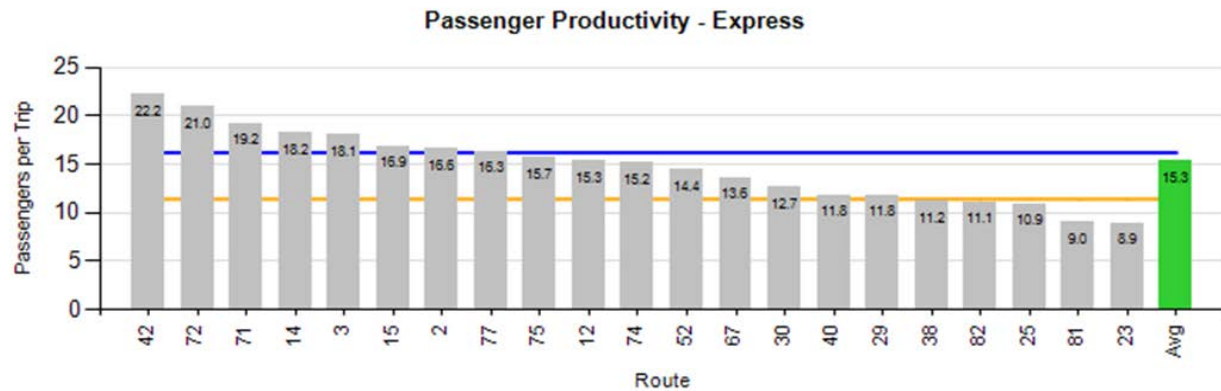
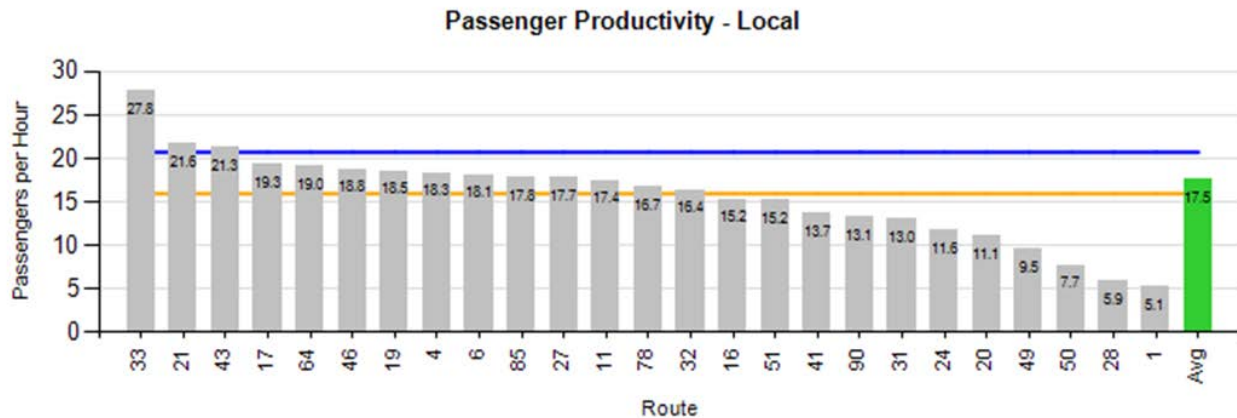


	ACTUAL	KPI	VARIANCE
COST PER PASSENGER	\$4.56	\$4.10	+\$0.46
AVERAGE HEADWAY (PEAK/OFF-PEAK)	13:28/15:55	12:00/15:00	+1:28/+0:55
PASSENGERS PER HOUR	44.2	52.8	-8.6
COST RECOVERY	13.5%	14.3%	-0.8%

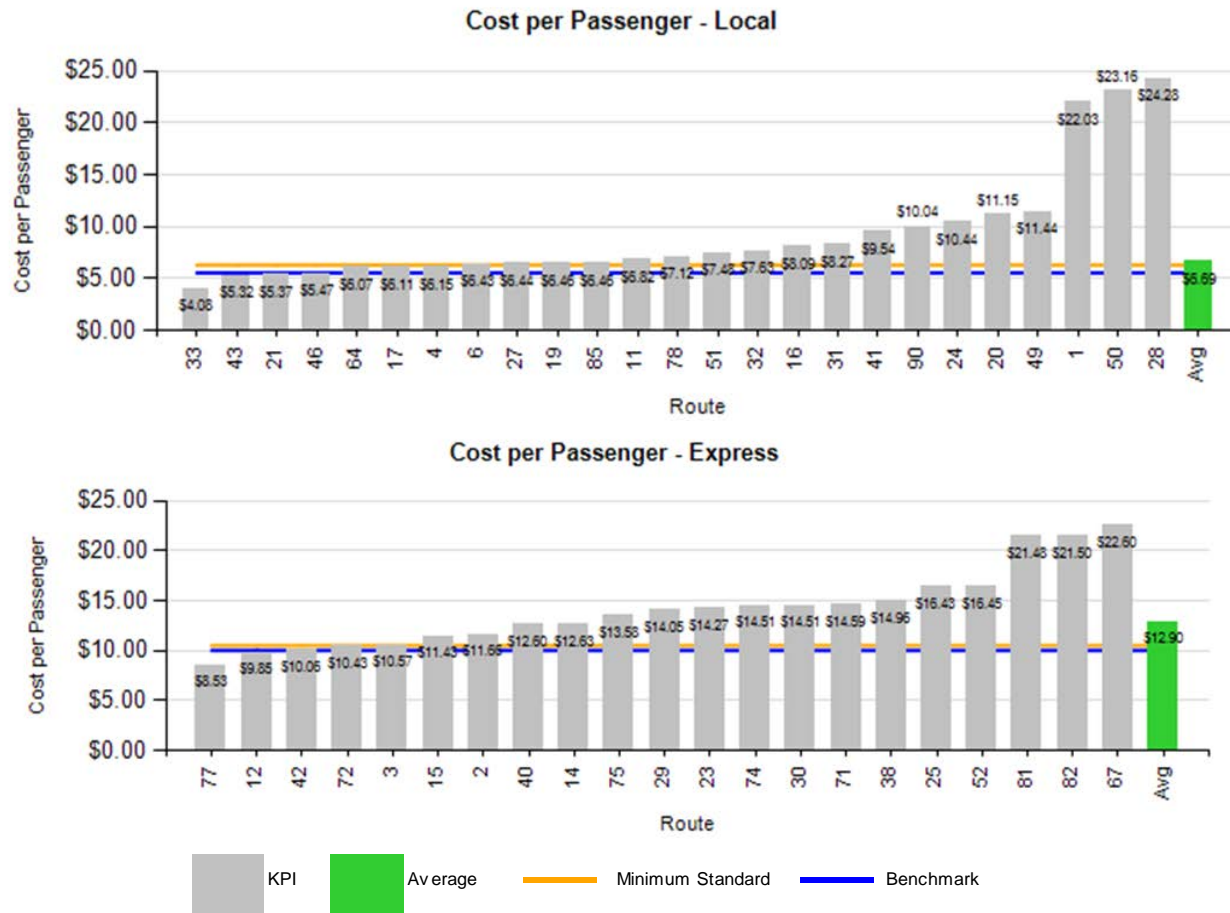
# Monthly Route Performance Measures



# Route Passenger KPIs - July

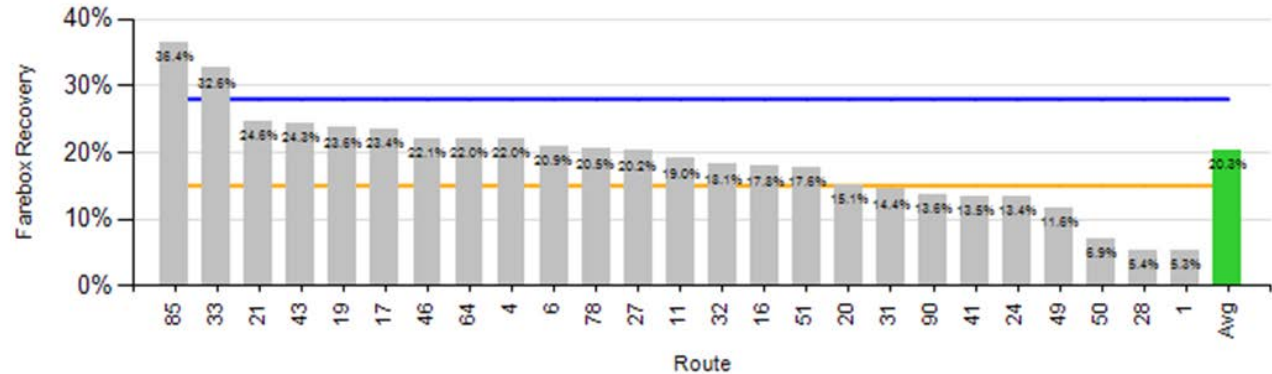


# Route Cost KPIs - July

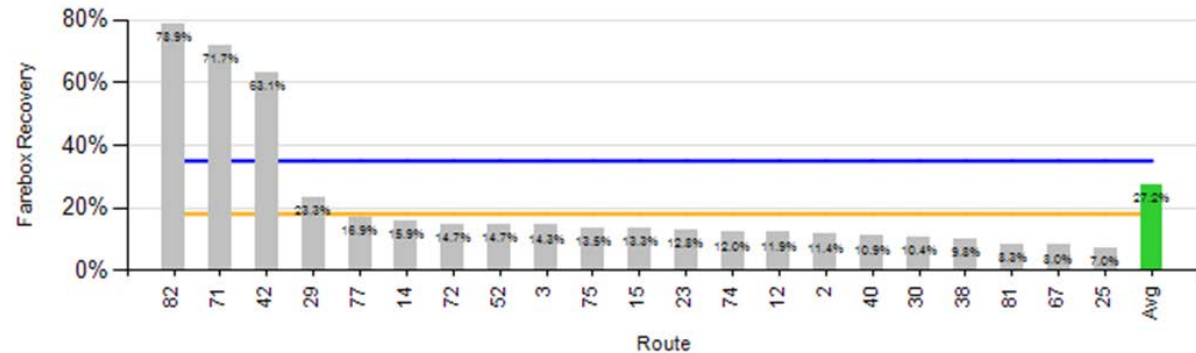


# Route Revenue KPIs - July

## Farebox Recovery - Local



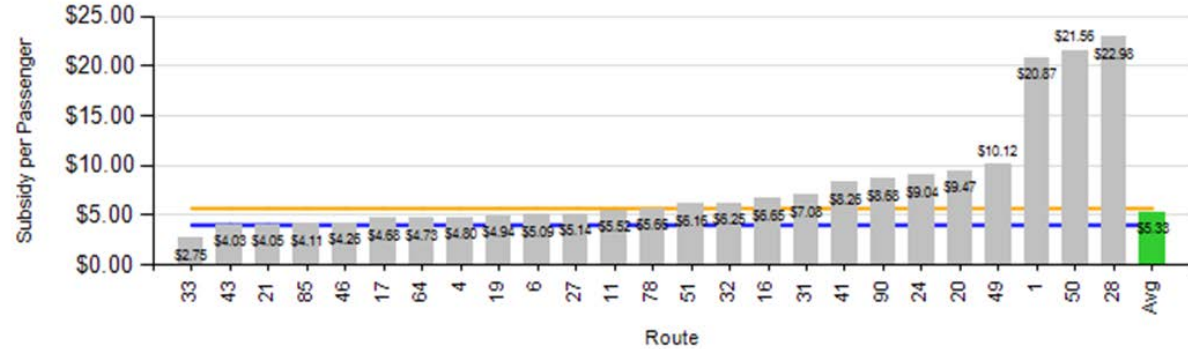
## Farebox Recovery - Express



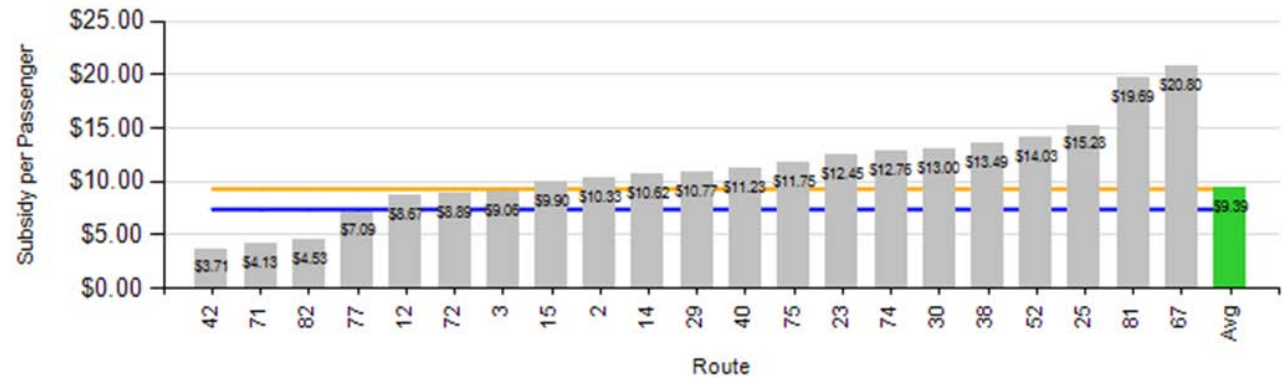


# Route Revenue KPIs - July

## Passenger Subsidy - Local

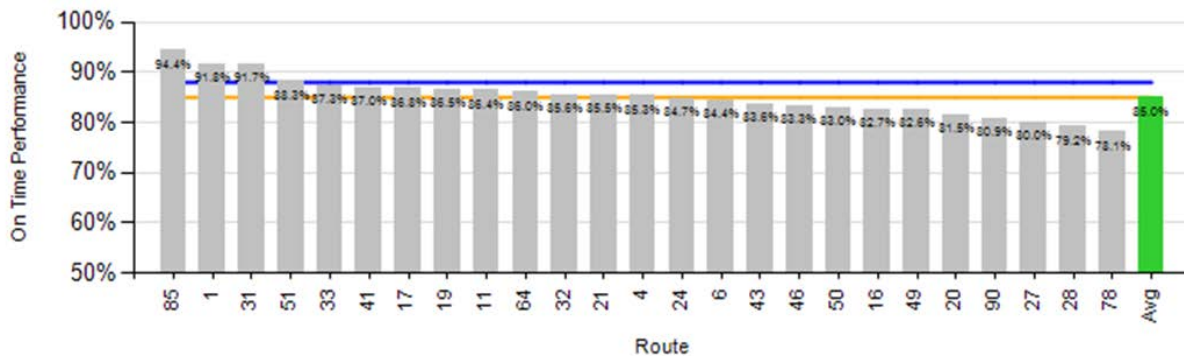


## Passenger Subsidy - Express



# Route OTP KPI - July

## On-Time Performance - Local



## On-Time Performance - Express

