

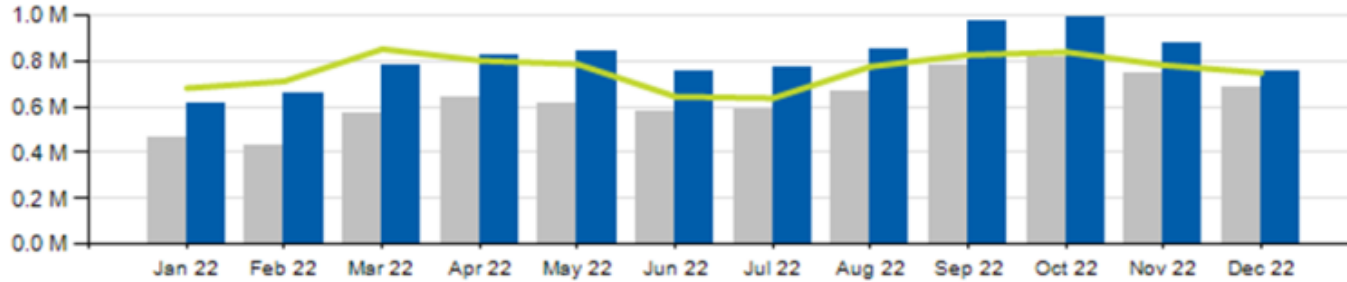


December 2022 Ridership Report



Local/Express Ridership

Total Ridership



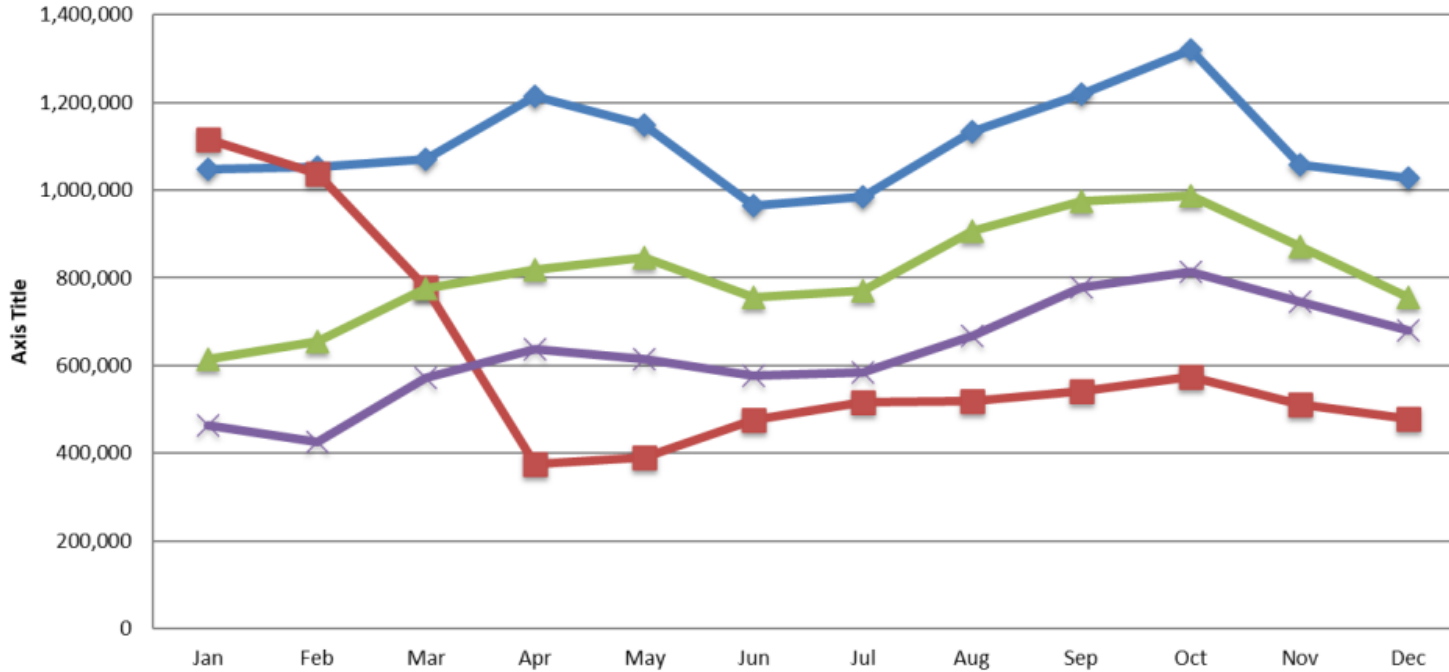
	ACTUAL	BUDGET	VARIANCE (%/#)		2021	VARIANCE (%/#)	
TOTAL	756,345	747,342	1.2%	9,003	680,724	11.1%	+75,621
LOCAL	740,235	730,269	1.4%	9,966	664,787	11.3%	+75,448
EXPRESS	16,110	17,073	-5.6%	-963	15,937	1.1%	+173
YTD TOTAL	9,679,228	9,079,491	6.6%	599,737	7,560,117	28.0%	+2,119,111

Current Year Prior Year Budget

Local/Express Ridership

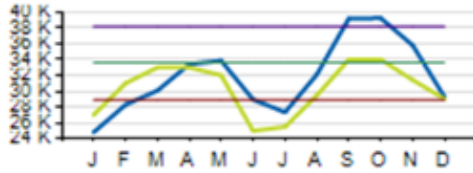
Monthly Fixed Ridership 2019 - Present

2019 Actual 2020 Actual 2021 Actual 2022 Actual

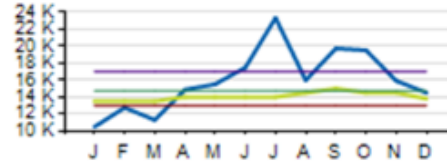


Local/Express KPIs

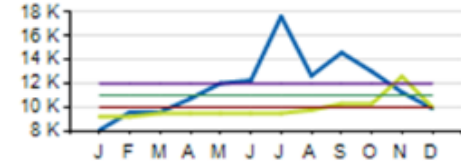
Average Fixed Ridership: Weekday



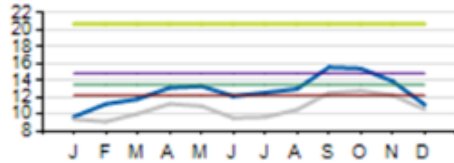
Average Fixed Ridership: Saturday



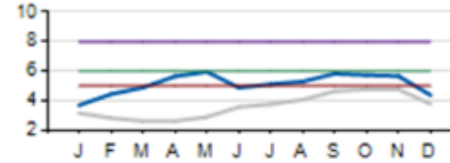
Average Fixed Ridership: Sunday



Passengers per Hour: Local



Passengers per Trip: Express



	ACTUAL	KPI/BUDGET	VARIANCE
PASSENGERS PER HOUR (LOCAL)	11.1	12.25	-1.2
PASSENGERS PER TRIP (EXPRESS)	4.4	5	-0.6
AVERAGE RIDERSHIP (WD)	29,281	29,014	+267
AVERAGE RIDERSHIP (SA)	14,511	13,808	+703
AVERAGE RIDERSHIP (SU)	9,904	10,001	-97

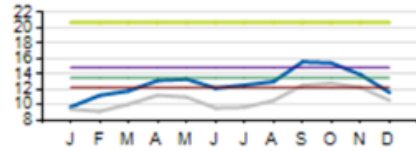
Current year

Prior year

KPI/Budget

Local/Express KPIs

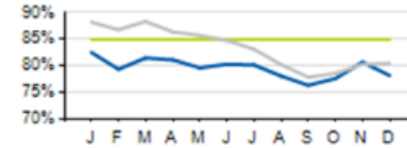
Passengers per Hour: Local



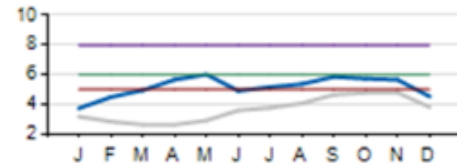
Service Cost Sharing: Local



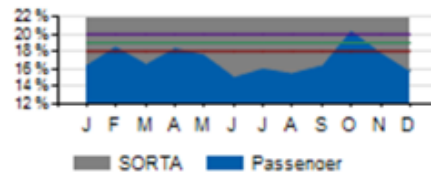
On-Time Performance: Local



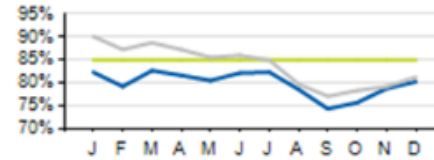
Passengers per Trip: Express



Service Cost Sharing: Express



On-Time Performance: Express



	ACTUAL	KPI	VARIANCE
COST PER PASSENGER (LOCAL)	\$13.56	\$12.50	+\$1.06
COST PER PASSENGER (EXPRESS)	\$47.68	\$50.00	-\$2.32
COST RECOVERY (LOCAL)	9.6%	10.0%	-0.4%
COST RECOVERY (EXPRESS)	17.2%	18.0%	-0.8%
ON TIME PERFORMANCE (LOCAL)	78.1%	85.0%	-6.9%
ON TIME PERFORMANCE (EXPRESS)	80.2%	85.0%	-4.8%

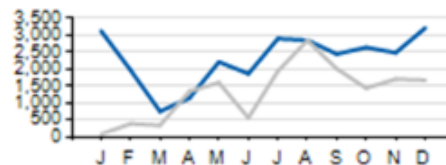
Current year

Prior year

KPI

Local/Express Missed Trips

Missed Trips



Current year

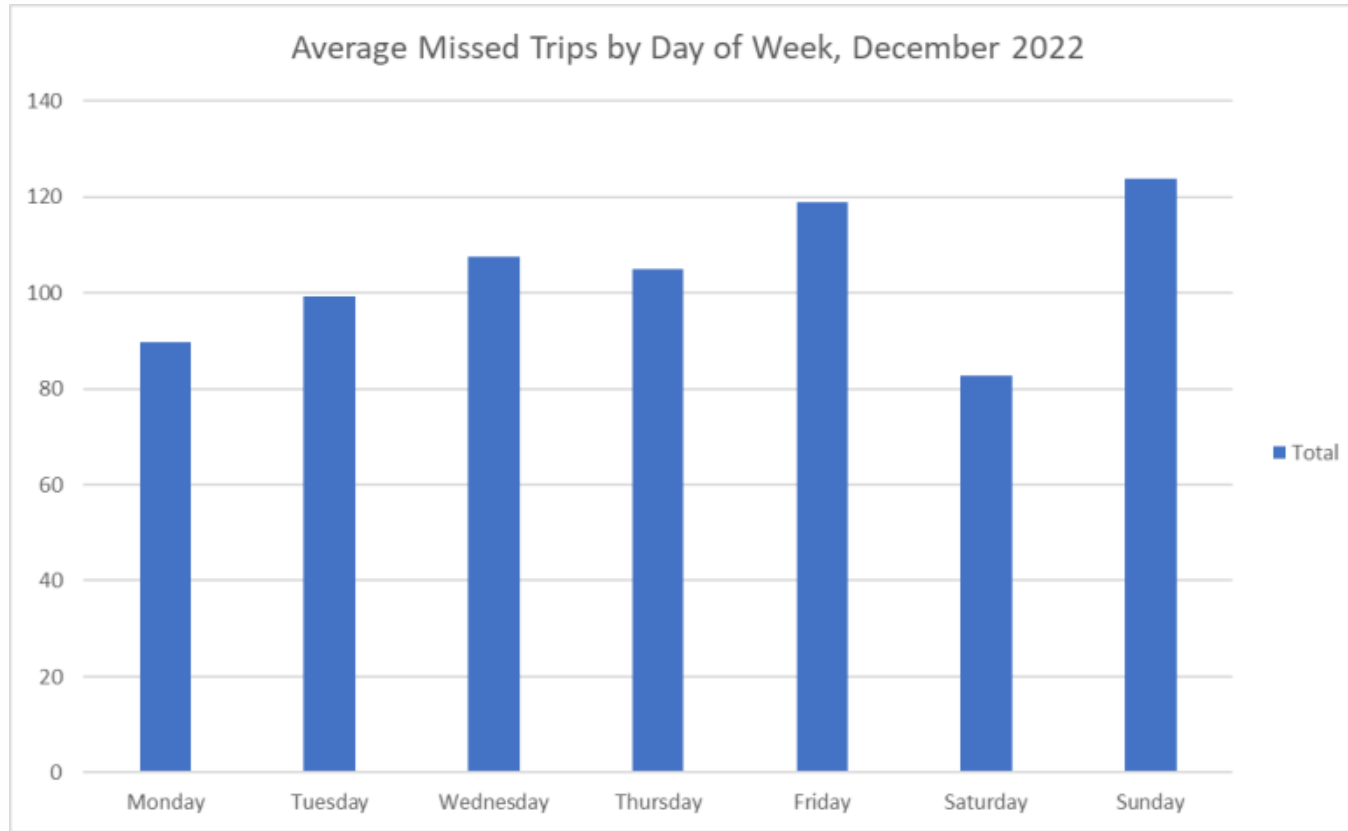


Prior year

	ACTUAL	TOTAL TRIPS	% OF TRIPS OPERATED
MISSED TRIPS (ALL SERVICE)	3,214	69,001	95%

REASON FOR MISSED TRIP	ACTUAL	% of MISSED TRIPS
NO OPERATOR AVAILABLE	3,103	95.0%
MECHANICAL ISSUE	3	0.0%
TRAFFIC INCIDENT	9	0.4%
LATE OPERATIONS	24	0.6%
OTHER	75	3.0%

Local/Express Missed Trips Due to No Operator

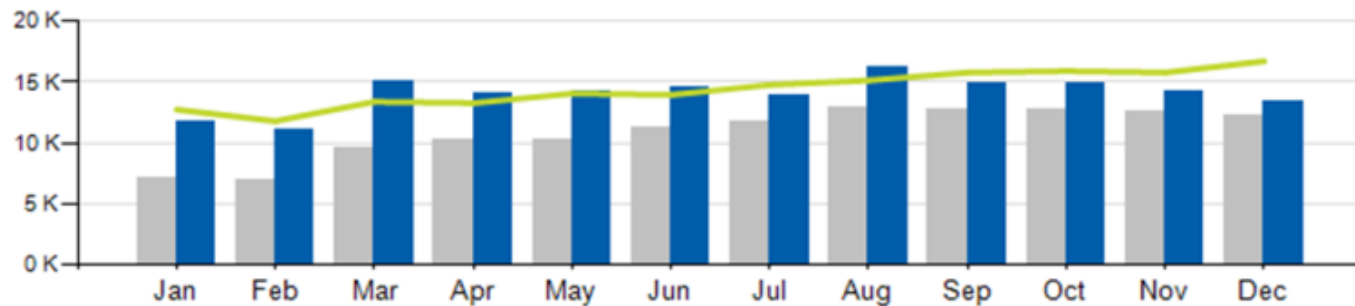




Access Ridership

Access Ridership

Total Ridership

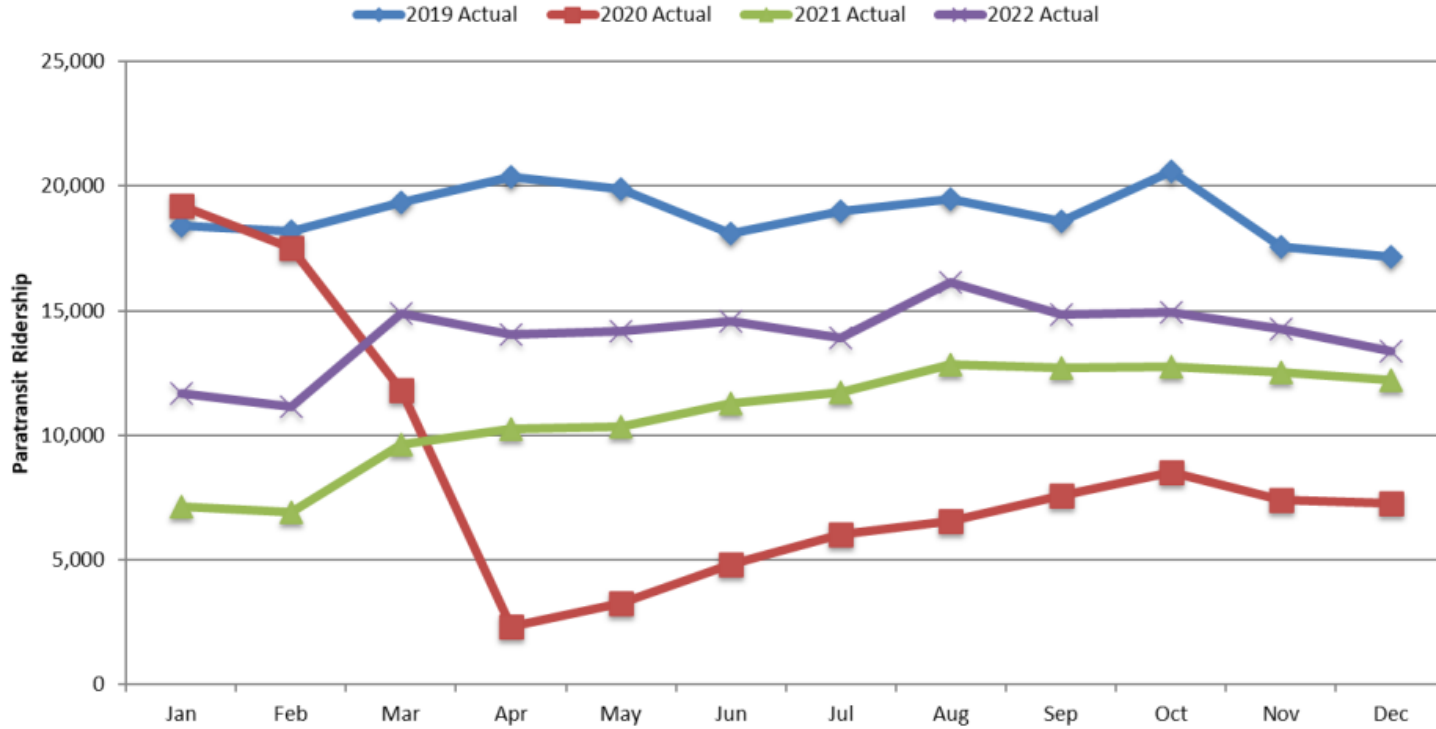


ACCESS PARATRANSIT	ACTUAL	BUDGET	VARIANCE (%/#)		2021	VARIANCE (%/#)	
TOTAL	12,224	16,697	-19.9%	-4,473	13,371	9.4%	-1,147
WD	11,228				12,346	10.0%	-1,118
SA	456				619	35.7%	-163
SU	540				406	-24.8%	+134
YTD	168,045	173,126	-2.9%	-5,081	130,274	29.0%	+37,771

Current Year
 Prior Year
 Budget

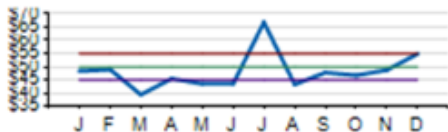
Access Ridership

Monthly Paratransit Ridership 2019 - Present

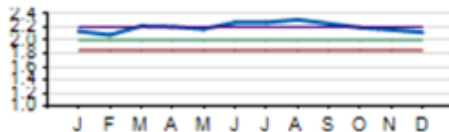


Access KPIs

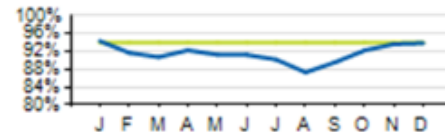
Cost per Passenger



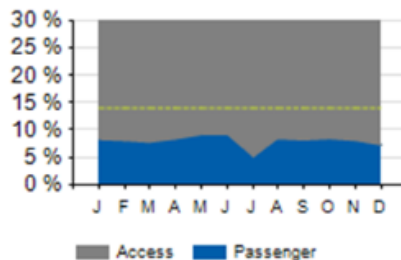
Passengers per Hour



On-Time Performance



Service Cost Sharing



	ACTUAL	KPI	VARIANCE
COST PER PASSENGER	\$54.91	\$55.00	-0.09
ON-TIME PERFORMANCE (OTP)	93.8%	94.0%	-0.2%
PASSENGER PER HOUR	2.1	2.2	-0.1%
COST RECOVERY	7.2%	14.0%	-6.8%

Current year

KPI

Ridership Roundup

**Metro is now
Partnering with**

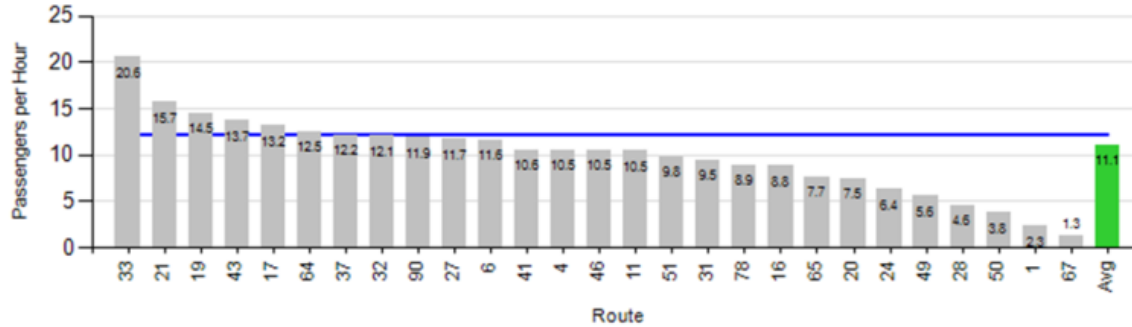


- 200 passes per month (and growing)!
- Remove transportation obstacles to attract & retain talent
- Encouraging sustainable commuting in the workplace
- Guaranteed monthly ridership revenue

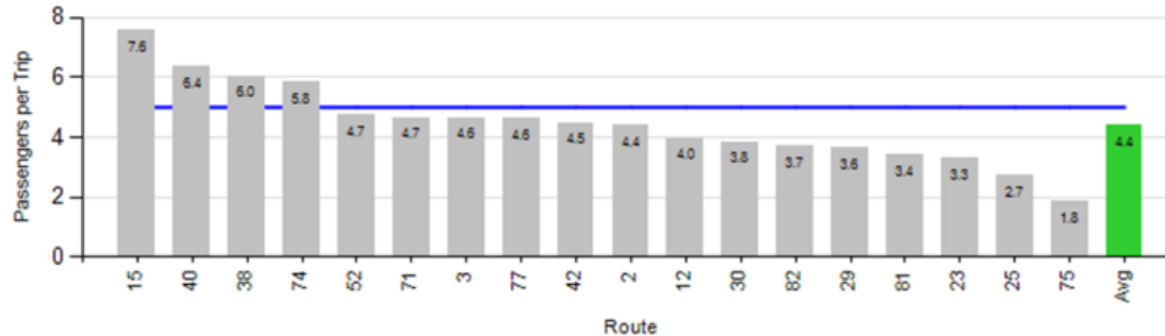
Appendix A: Monthly Route Performance Measures

Route Passenger KPIs - December

Passenger Productivity - Local

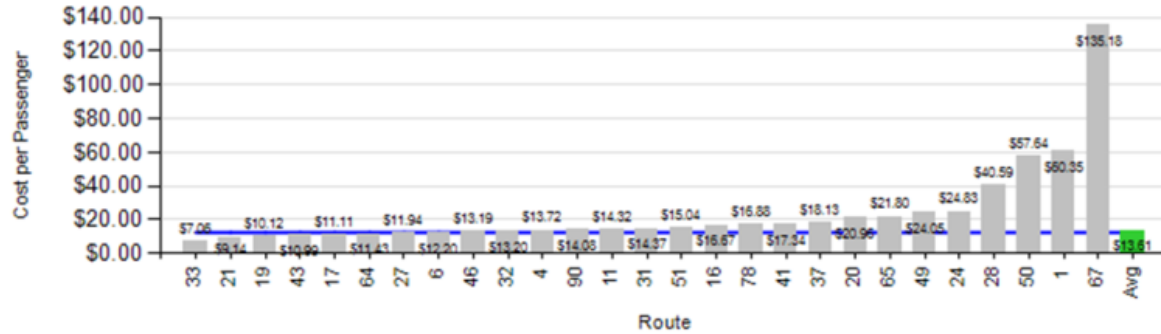


Passenger Productivity - Express

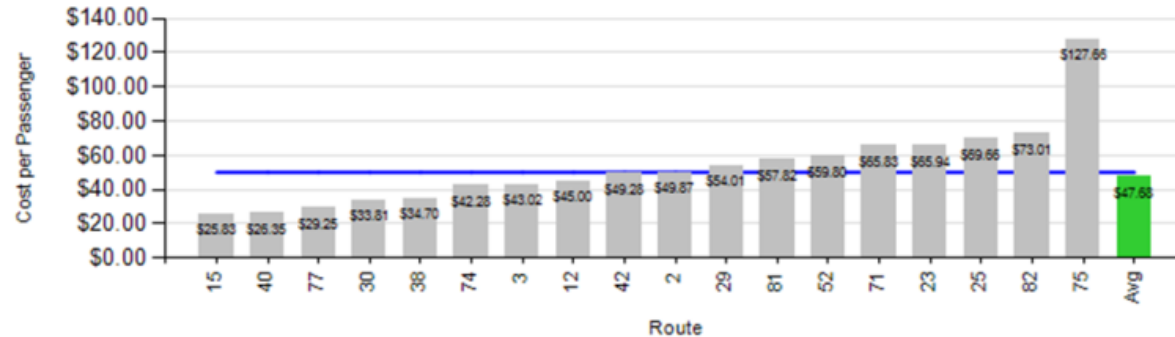


Route Cost KPIs - December

Cost per Passenger - Local

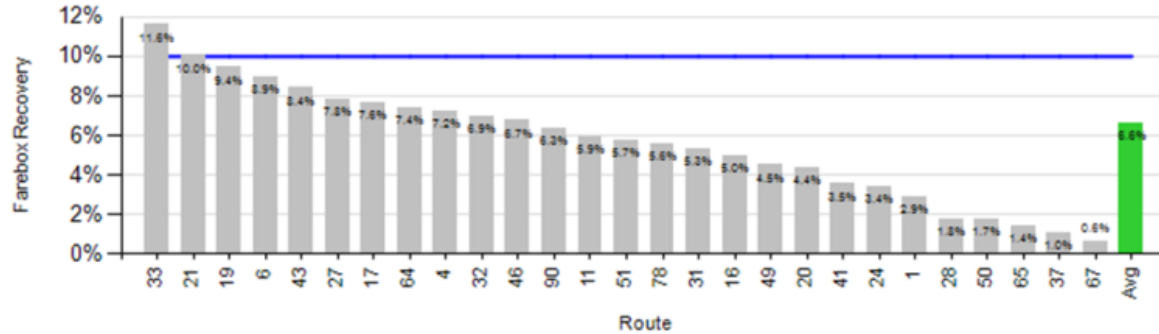


Cost per Passenger - Express

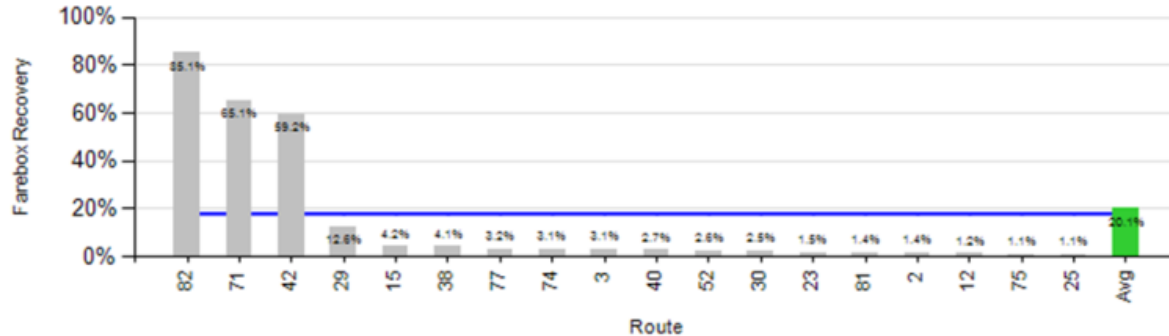


Route Revenue KPIs - December

Farebox Recovery - Local

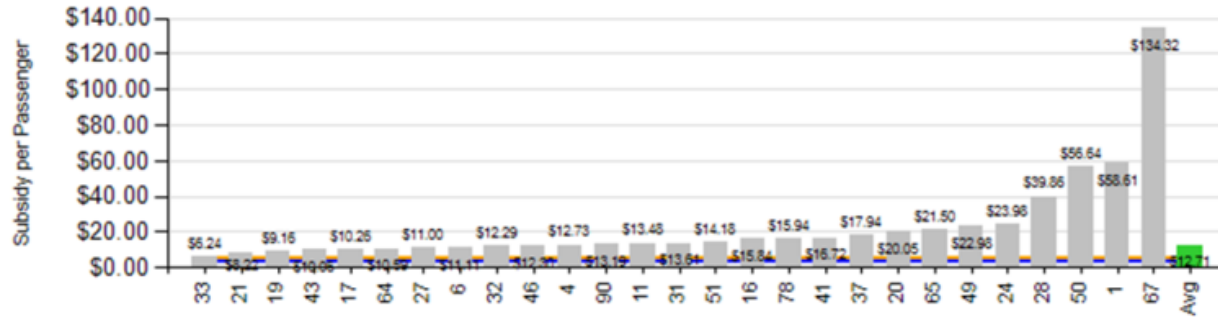


Farebox Recovery - Express

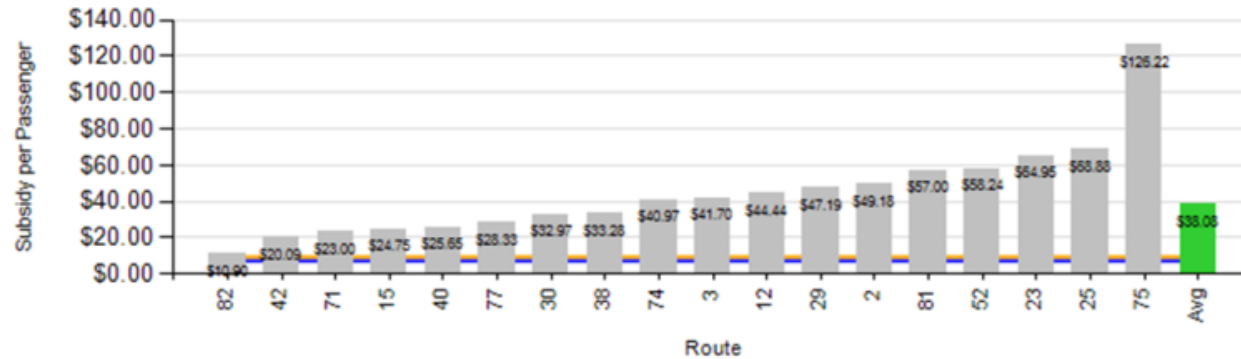


Route Revenue KPIs - December

Passenger Subsidy - Local

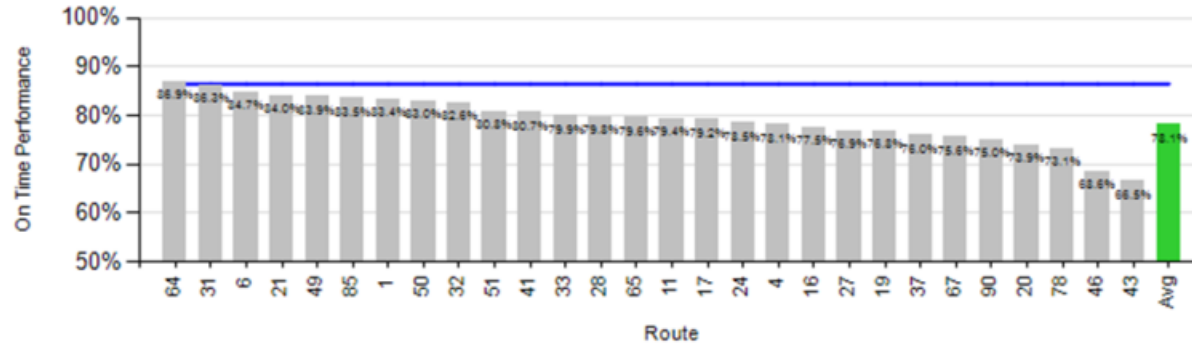


Passenger Subsidy - Express



Route Revenue KPIs - December

On-Time Performance - Local



On-Time Performance - Express

