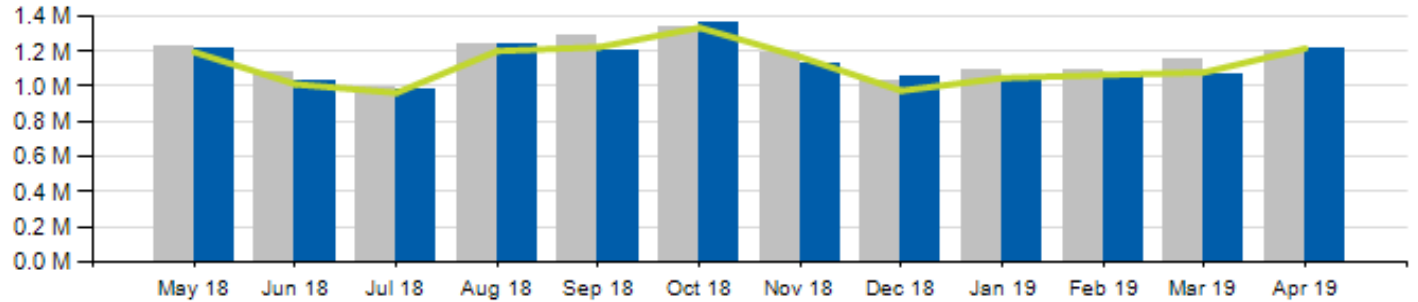




# April 2019 Ridership Report

# Local/Express Ridership

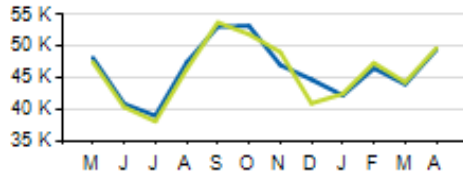
Total Ridership



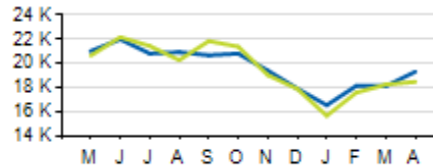
	ACTUAL	BUDGET	VARIANCE (% / #)		2018	VARIANCE (% / #)	
<b>TOTAL</b>	<b>1,213,480</b>	<b>1,215,734</b>	<b>-0.2%</b>	<b>-2,254</b>	<b>1,203,476</b>	<b>0.8%</b>	<b>10,004</b>
<b>LOCAL</b>	<b>1,135,656</b>	<b>1,137,260</b>	<b>-0.1%</b>	<b>-1,604</b>	<b>1,126,609</b>	<b>0.8%</b>	<b>9,047</b>
<b>EXPRESS</b>	<b>77,824</b>	<b>78,474</b>	<b>-0.8%</b>	<b>-650</b>	<b>76,867</b>	<b>1.2%</b>	<b>957</b>
<b>YTD TOTAL</b>	<b>4,385,634</b>	<b>4,407,911</b>	<b>-0.5%</b>	<b>-22,277</b>	<b>4,548,165</b>	<b>-3.6%</b>	<b>-162,531</b>

# Local/Express KPIs

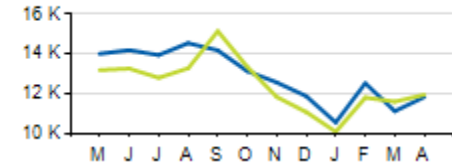
Average Fixed Ridership: Weekday



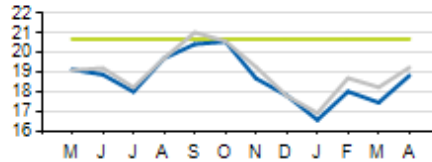
Average Fixed Ridership: Saturday



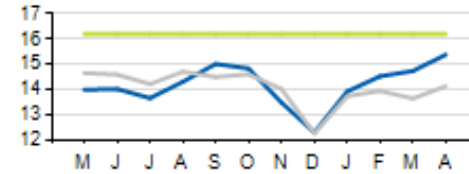
Average Fixed Ridership: Sunday



Passengers per Hour: Local



Passengers per Trip: Express



	ACTUAL	KPI/BUDGET	VARIANCE
<b>PASSENGERS PER HOUR (LOCAL)</b>	<b>18.8</b>	<b>20.7</b>	<b>-1.9</b>
<b>PASSENGERS PER TRIP (EXPRESS)</b>	<b>15.4</b>	<b>16.2</b>	<b>-0.8</b>
<b>AVERAGE RIDERSHIP (WD)</b>	<b>49,493</b>	<b>49,727</b>	<b>-234</b>
<b>AVERAGE RIDERSHIP (SA)</b>	<b>19,318</b>	<b>18,481</b>	<b>+837</b>
<b>AVERAGE RIDERSHIP (SU)</b>	<b>11,839</b>	<b>11,954</b>	<b>-115</b>



Current year



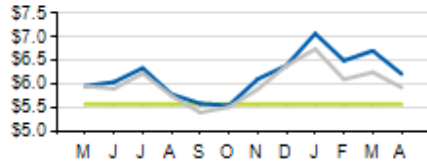
Prior year



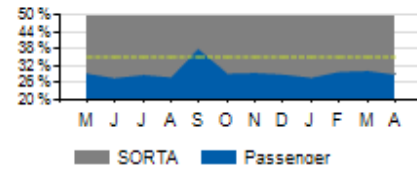
KPI/Budget

# Local/Express KPIs

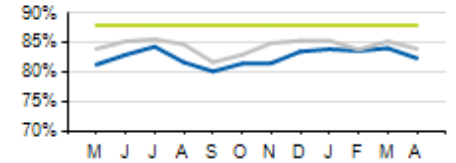
Cost per Passenger: Local



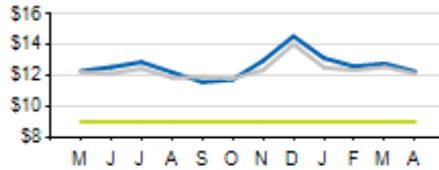
Service Cost Sharing: Express



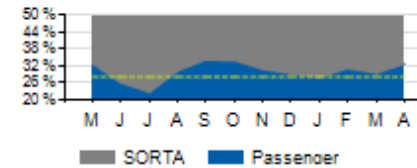
On-Time Performance: Local



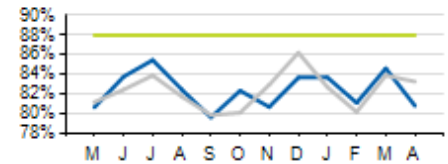
Cost per Passenger: Express



Service Cost Sharing: Local



On-Time Performance: Express

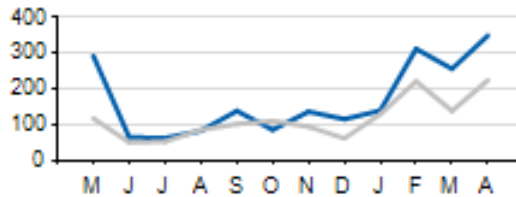


	ACTUAL	KPI	VARIANCE
<b>COST PER PASSENGER (LOCAL)</b>	<b>\$6.22</b>	<b>\$5.57</b>	<b>+0.65</b>
<b>COST PER PASSENGER (EXPRESS)</b>	<b>\$12.27</b>	<b>\$9.00</b>	<b>+\$3.27</b>
<b>COST RECOVERY (LOCAL)</b>	<b>32.7%</b>	<b>28.0%</b>	<b>+4.7%</b>
<b>COST RECOVERY (EXPRESS)</b>	<b>29.1%</b>	<b>35.0%</b>	<b>-5.9%</b>
<b>ON TIME PERFORMANCE (LOCAL)</b>	<b>82.4%</b>	<b>88.0%</b>	<b>-5.6%</b>
<b>ON TIME PERFORMANCE (EXPRESS)</b>	<b>80.8%</b>	<b>88.0%</b>	<b>-7.2%</b>

Current year
  Prior year
  KPI

# Local/Express Missed Trips

Missed Trips



Current year



Prior year

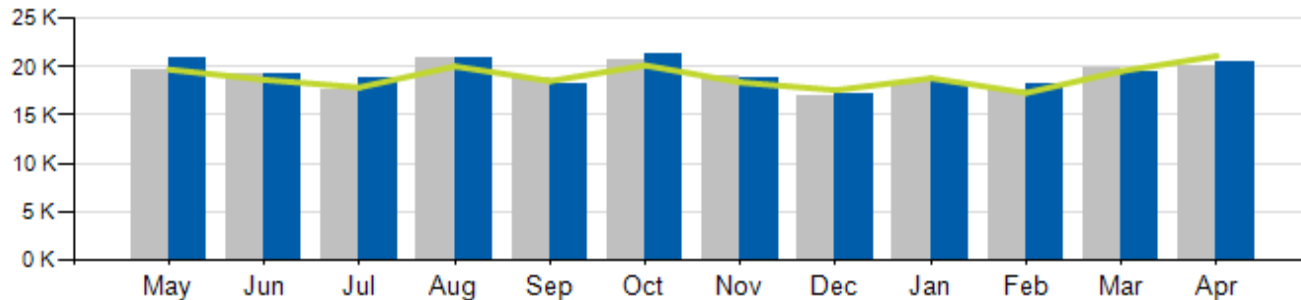
	ACTUAL	TOTAL TRIPS	% OF TRIPS OPERATED
<b>MISSED TRIPS (ALL SERVICE)</b>	<b>347</b>	<b>58,748</b>	<b>99.4%</b>

REASON FOR MISSED TRIP	ACTUAL	% of MISSED TRIPS
NO OPERATOR AVAILABLE	228	66.0%
MECHANICAL ISSUE	44	12.7%
TRAFFIC INCIDENT	31	8.9%
LATE OPERATIONS	32	9.2%
OTHER	12	3.5%



# Access Ridership

Total Ridership

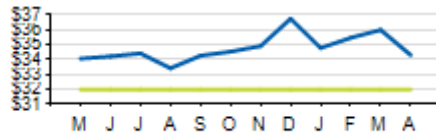


ACCESS PARATRANSIT	ACTUAL	BUDGET	VARIANCE (%/#)		2018	VARIANCE (%/#)	
			%	#		%	#
<b>TOTAL</b>	<b>20,373</b>	<b>21,104</b>	<b>-3.5%</b>	<b>-731</b>	<b>19,997</b>	<b>1.9%</b>	<b>376</b>
<b>WD</b>	<b>19,074</b>				<b>18,522</b>	<b>3.0%</b>	<b>552</b>
<b>SA</b>	<b>790</b>				<b>747</b>	<b>5.8%</b>	<b>43</b>
<b>SU</b>	<b>509</b>				<b>728</b>	<b>-30.1%</b>	<b>-219</b>
<b>YTD</b>	<b>76,325</b>	<b>76,759</b>	<b>-0.6%</b>	<b>-434</b>	<b>76,003</b>	<b>0.4%</b>	<b>322</b>

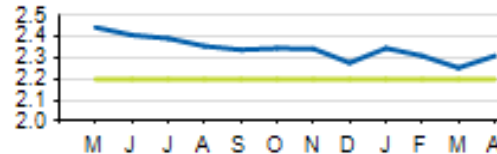


# Access KPIs

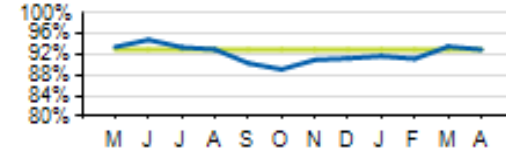
Cost per Passenger



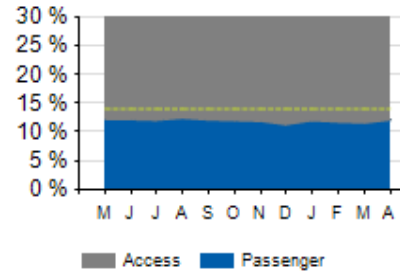
Passengers per Hour



On-Time Performance



Service Cost Sharing



	ACTUAL	KPI	VARIANCE
<b>COST PER PASSENGER</b>	<b>\$34.31</b>	<b>\$32.00</b>	<b>+\$2.31</b>
<b>ON-TIME PERFORMANCE (OTP)</b>	<b>93.0%</b>	<b>93.0%</b>	<b>0%</b>
<b>PASSENGERS PER HOUR</b>	<b>2.31</b>	<b>2.20</b>	<b>+0.11</b>
<b>COST RECOVERY</b>	<b>12.1%</b>	<b>14.0%</b>	<b>-1.9%</b>

Current year
  KPI

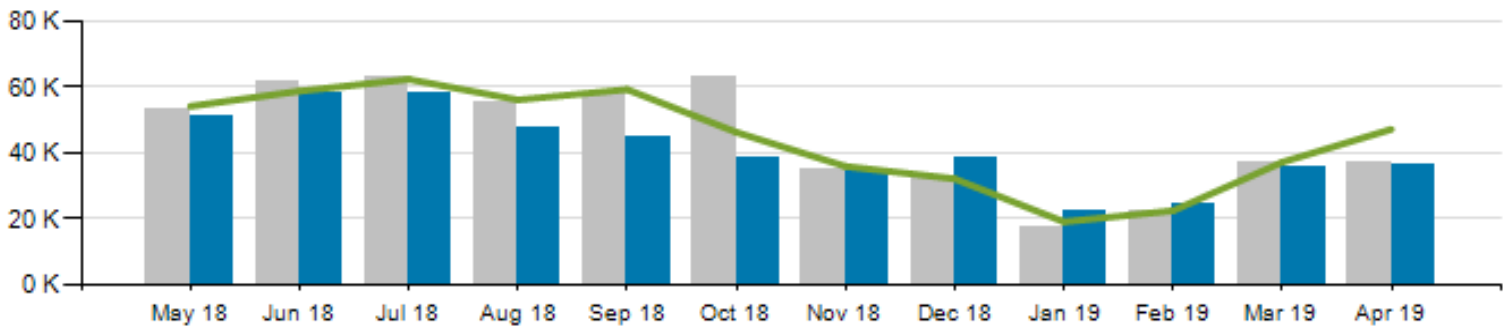
# Cincinnati Bell Connector





# CB Connector Ridership

Total Ridership

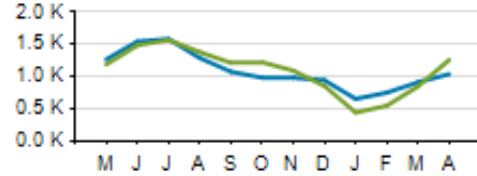


	ACTUAL	BUDGET	VARIANCE (%/#)		FY2018	VARIANCE (%/#)	
<b>TOTAL</b>	<b>36,333</b>	<b>47,220</b>	<b>-23.1%</b>	<b>-10,887</b>	<b>36,998</b>	<b>-1.8%</b>	<b>-665</b>
<b>FYTD TOTAL</b>	<b>381,521</b>	<b>418,579</b>	<b>-8.9%</b>	<b>-37,058</b>	<b>421,199</b>	<b>-9.4%</b>	<b>-39,678</b>

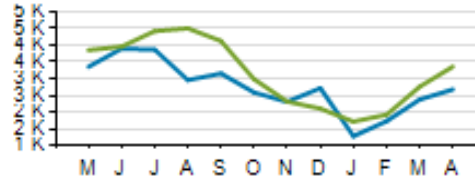
■ Current Year   
 ■ Prior Year   
 — Budget

# CB Connector KPIs

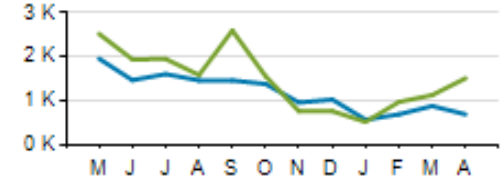
Average Ridership: Weekday



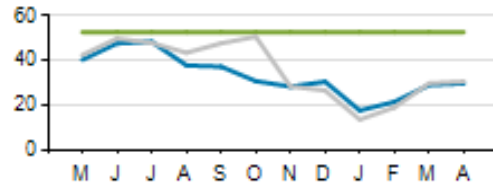
Average Ridership: Saturday



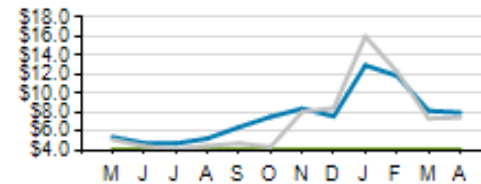
Average Ridership: Sunday



Passengers per Hour



Cost per Passenger

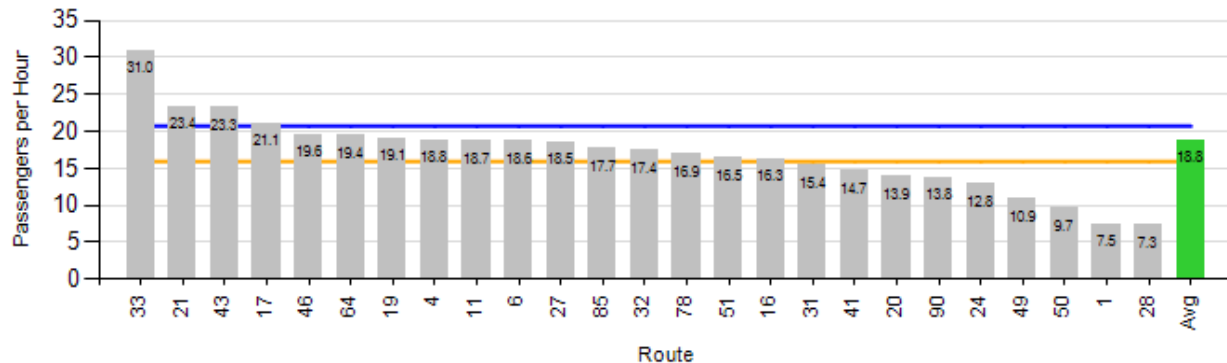


	ACTUAL	KPI	VARIANCE
<b>COST PER PASSENGER</b>	<b>\$7.98</b>	<b>\$4.10</b>	<b>+\$3.88</b>
<b>AVERAGE HEADWAY (PEAK/OFF-PEAK)</b>	<b>13:24/15:40</b>	<b>12:00/15:00</b>	<b>+1:24/+0:40</b>
<b>PASSENGERS PER HOUR</b>	<b>29.8</b>	<b>52.8</b>	<b>-23</b>
<b>COST RECOVERY</b>	<b>8.1%</b>	<b>14.3%</b>	<b>-6.2%</b>

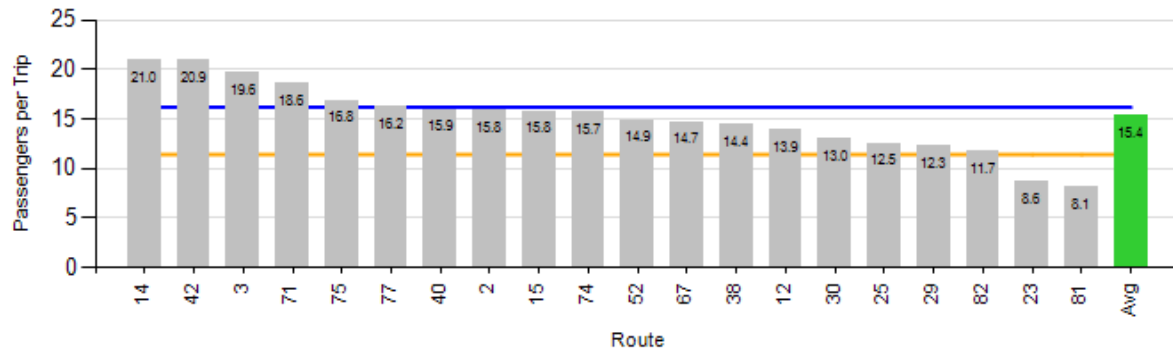
# Monthly Route Performance Measures

# Route Passenger KPIs - April

### Passenger Productivity - Local



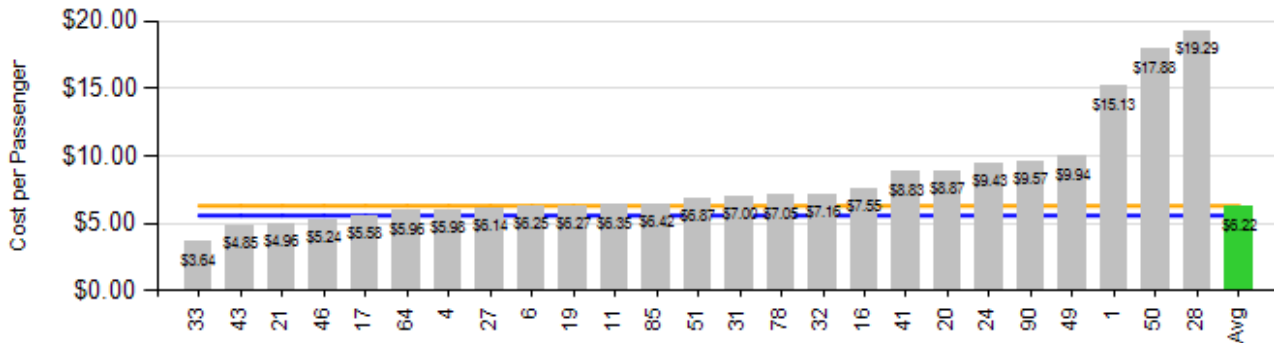
### Passenger Productivity - Express



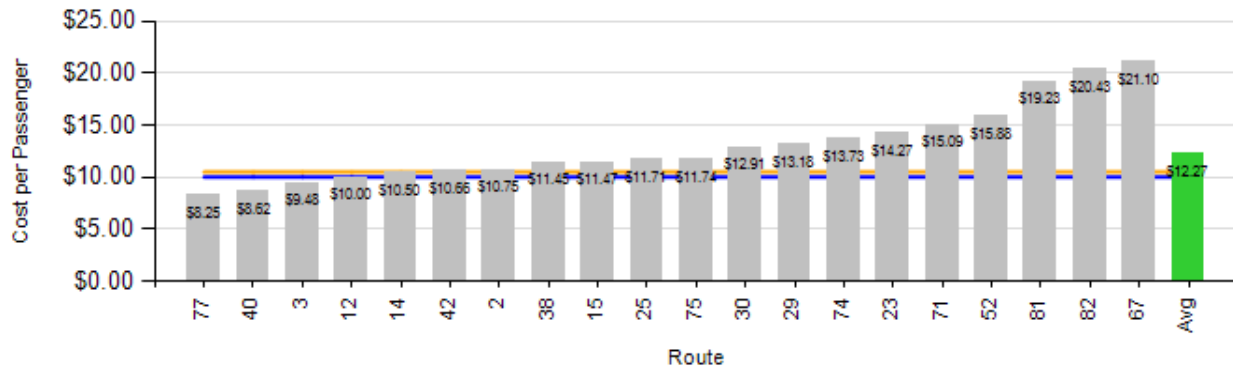


# Route Cost KPIs - April

### Cost per Passenger - Local



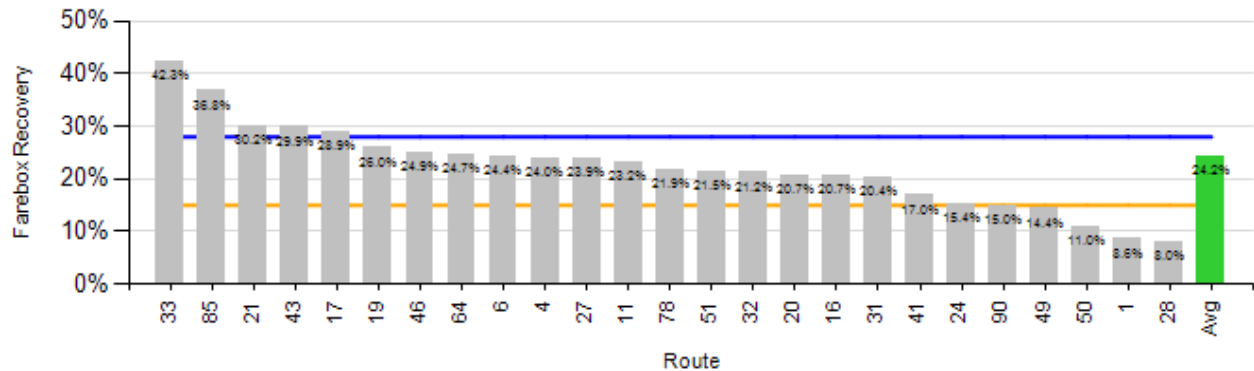
### Cost per Passenger - Express



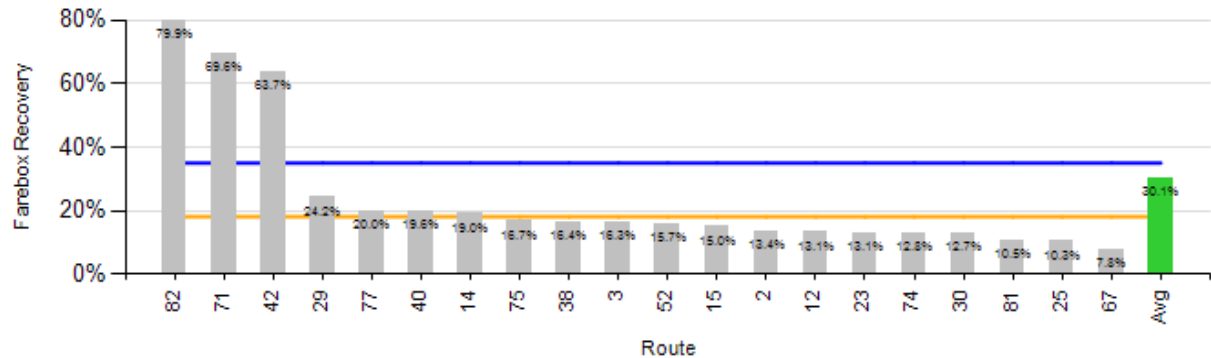
Legend:   
 KPI (Grey bar)   
 Average (Green bar)   
 Minimum Standard (Orange line)   
 Benchmark (Blue line)

# Route Revenue KPIs - April

### Farebox Recovery - Local



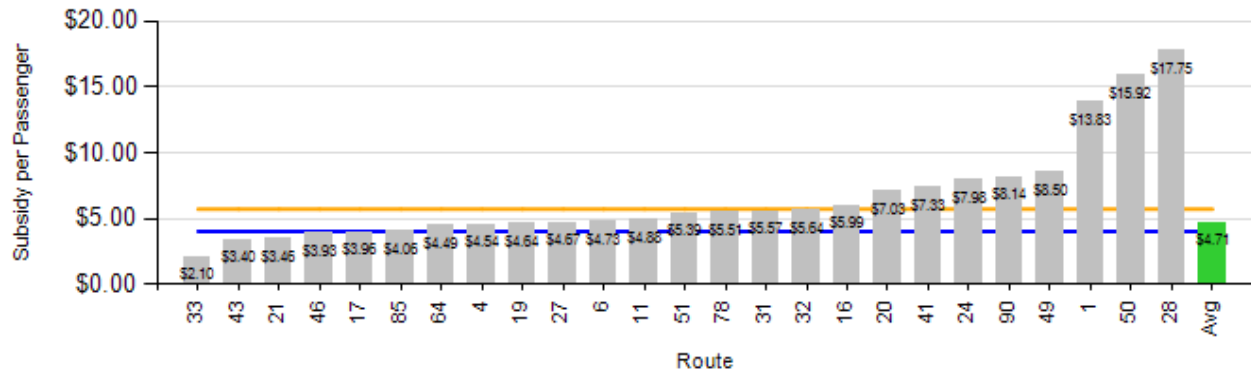
### Farebox Recovery - Express



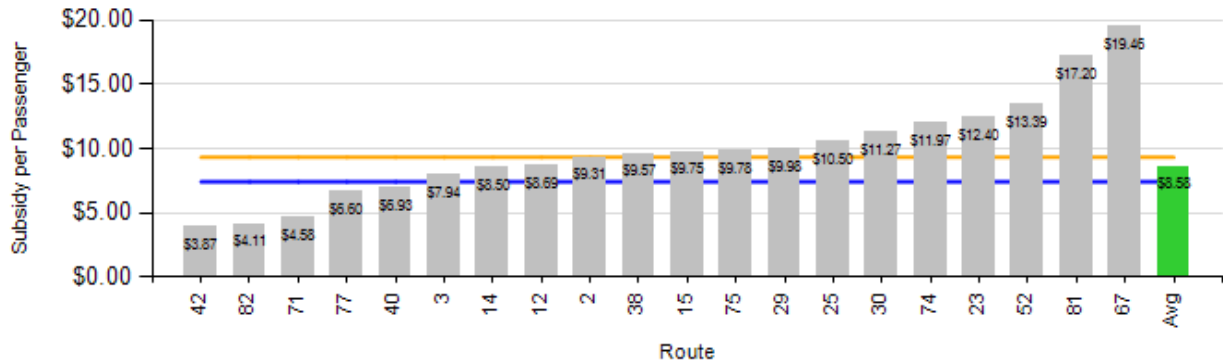
Legend:   
 KPI (Grey bar)   
 Average (Green bar)   
 Minimum Standard (Orange line)   
 Benchmark (Blue line)

# Route Revenue KPIs - April

### Passenger Subsidy - Local



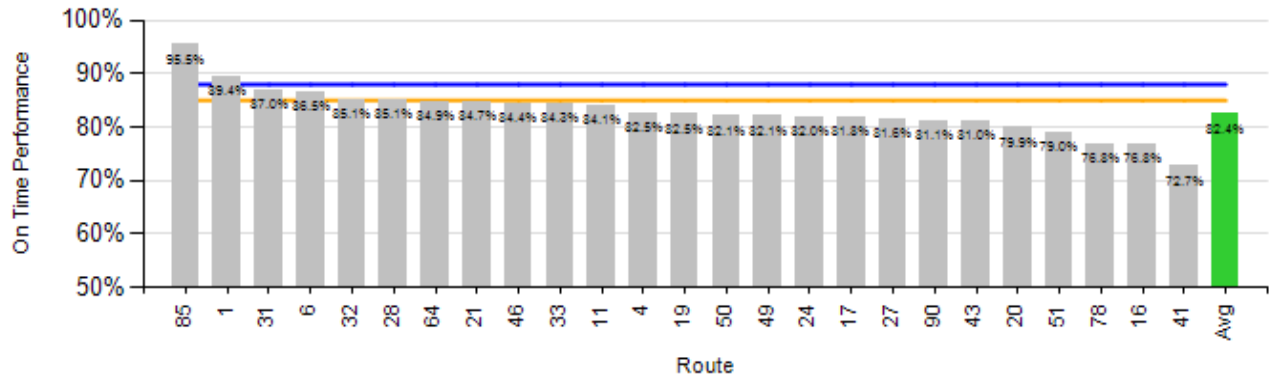
### Passenger Subsidy - Express



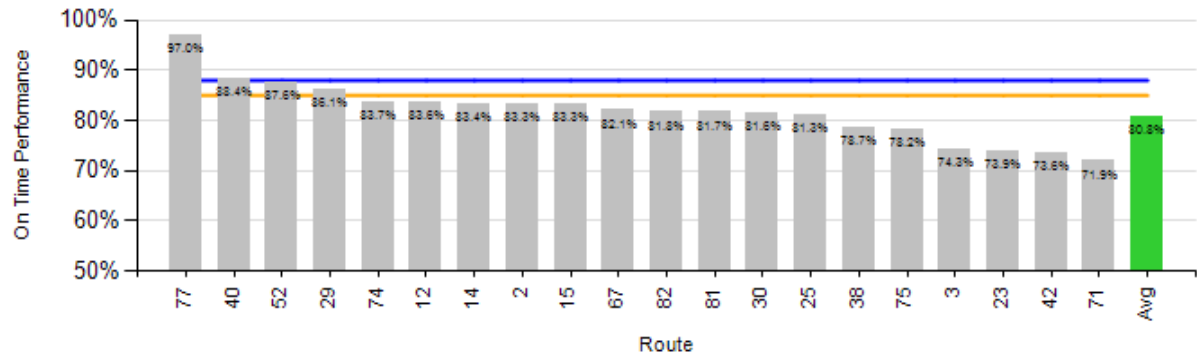
Legend: KPI (grey bar), Average (green bar), Minimum Standard (orange line), Benchmark (blue line)

# Route OTP KPI - April

## On-Time Performance - Local



## On-Time Performance - Express



Legend: KPI (Grey bar), Average (Green bar), Minimum Standard (Orange line), Benchmark (Blue line)