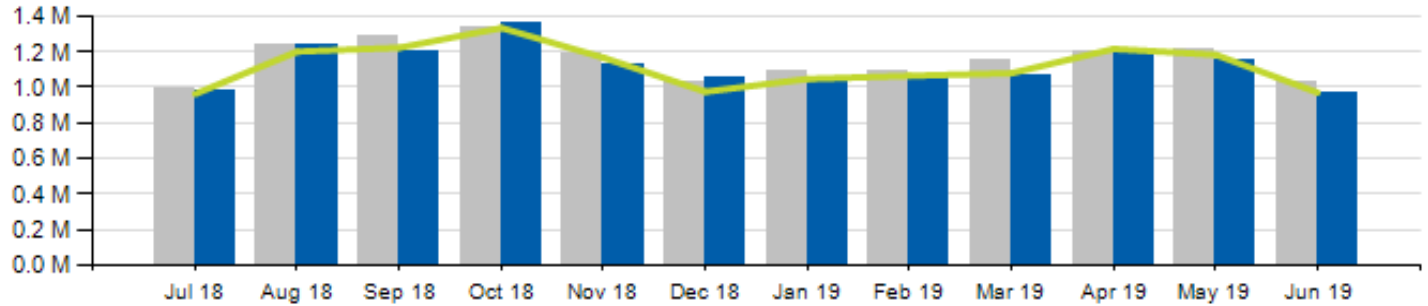


June 2019 Ridership Report

Local/Express Ridership

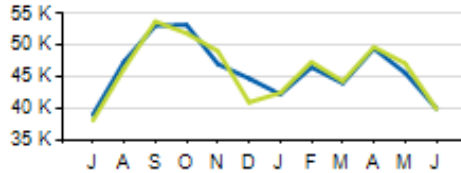
Total Ridership



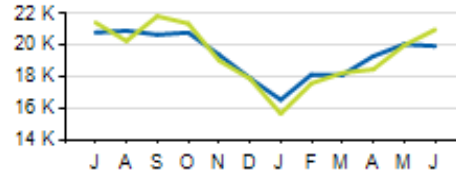
	ACTUAL	BUDGET	VARIANCE (%/#)		2018	VARIANCE (%/#)	
TOTAL	965,109	970,580	-1.0%	-5,471	1,025,638	-5.9%	-60,529
LOCAL	888,347	894,575	-1.0%	-6,228	943,491	-5.8%	-55,144
EXPRESS	76,762	76,005	-0.9%	757	82,147	-6.6%	-5,385
YTD TOTAL	6,498,993	6,561,462	-1.0%	-62,469	6,788,148	-4.3%	-289,155

Local/Express KPIs

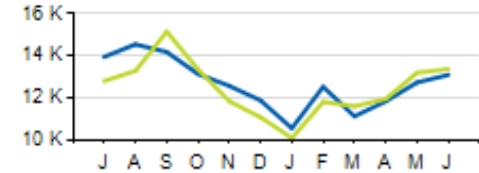
Average Fixed Ridership: Weekday



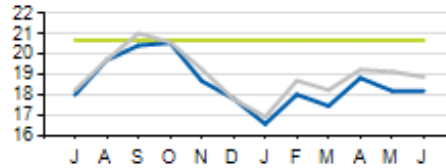
Average Fixed Ridership: Saturday



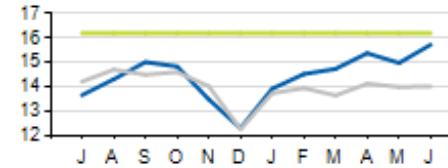
Average Fixed Ridership: Sunday



Passengers per Hour: Local



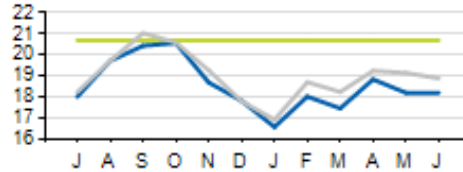
Passengers per Trip: Express



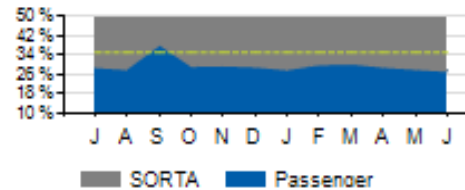
	ACTUAL	KPI/BUDGET	VARIANCE
PASSENGERS PER HOUR (LOCAL)	18.2	20.7	-2.5
PASSENGERS PER TRIP (EXPRESS)	15.7	16.2	-0.5
AVERAGE RIDERSHIP (WD)	39,988	39,935	+53
AVERAGE RIDERSHIP (SA)	19,967	20,994	-1,027
AVERAGE RIDERSHIP (SU)	13,099	13,382	-283

Local/Express KPIs

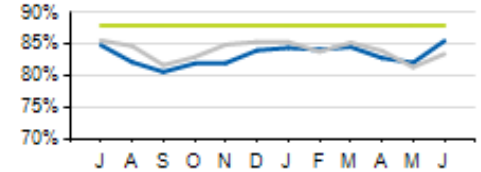
Passengers per Hour: Local



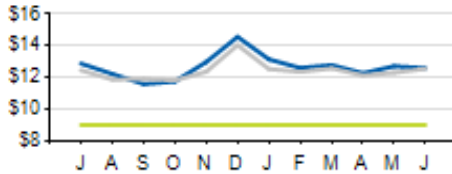
Service Cost Sharing: Express



On-Time Performance: Local



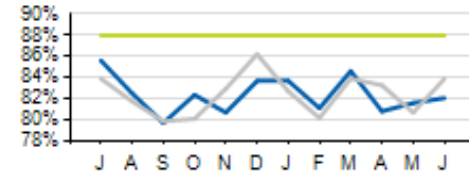
Cost per Passenger: Express



Service Cost Sharing: Local



On-Time Performance: Express

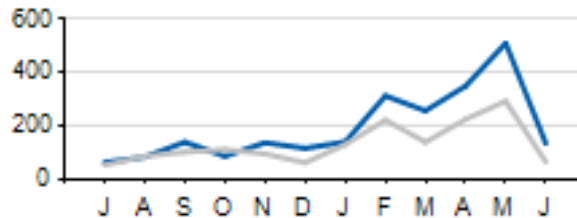


	ACTUAL	KPI	VARIANCE
COST PER PASSENGER (LOCAL)	\$6.44	\$5.57	+\$0.87
COST PER PASSENGER (EXPRESS)	\$12.60	\$9.00	+\$3.60
COST RECOVERY (LOCAL)	18.2%	28.0%	-9.8%
COST RECOVERY (EXPRESS)	27.4%	35.0%	-7.6%
ON TIME PERFORMANCE (LOCAL)	85.6%	86.5%	-0.9%
ON TIME PERFORMANCE (EXPRESS)	82.0%	86.5%	-4.5%

Current year
 Prior year
 KPI

Local/Express Missed Trips

Missed Trips



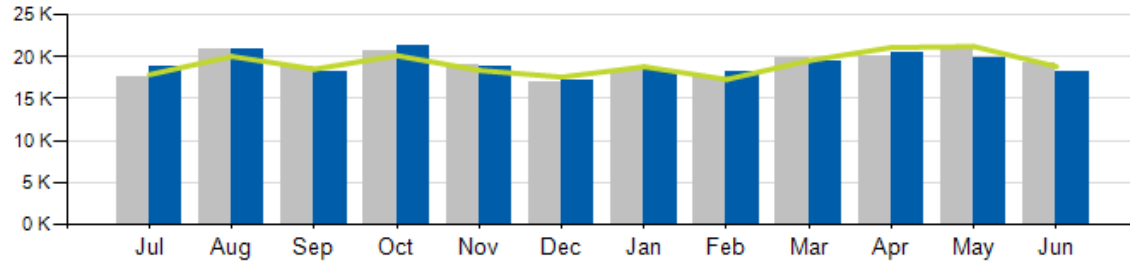
Current year Prior year

	ACTUAL	TOTAL TRIPS	% OF TRIPS OPERATED
MISSED TRIPS (ALL SERVICE)	133	56,423	99.8%

REASON FOR MISSED TRIP	ACTUAL	% of MISSED TRIPS
NO OPERATOR AVAILABLE	34	26.0%
MECHANICAL ISSUE	49	36.8%
TRAFFIC INCIDENT	21	15.8%
LATE OPERATIONS	22	16.5%
OTHER	7	5.2%

Access Ridership

Total Ridership

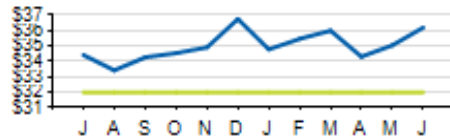


ACCESS PARATRANSIT	ACTUAL	BUDGET	VARIANCE (%/#)		2018	VARIANCE (%/#)	
			%	#		%	#
TOTAL	18,093	18,828	-3.9%	-735	19,167	-5.6%	-1,074
WD	16,725				17,715	-5.6%	-990
SA	760				844	-10.0%	-84
SU	608				608	-0.0%	0
YTD	114,300	116,806	-2.1%	-2,506	116,006	-1.5%	-1,706

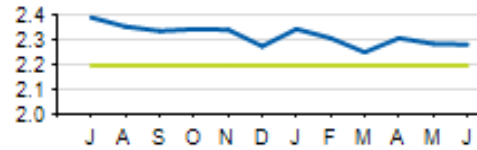


Access KPIs

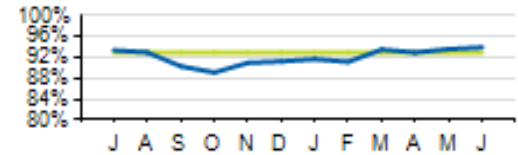
Cost per Passenger



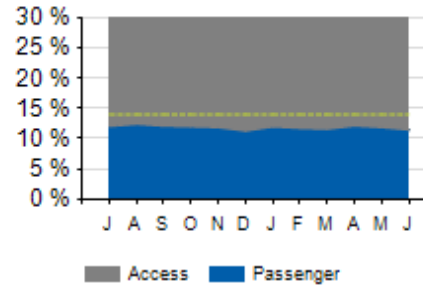
Passengers per Hour



On-Time Performance



Service Cost Sharing



	ACTUAL	KPI	VARIANCE
COST PER PASSENGER	\$36.20	\$32.00	+\$4.20
ON-TIME PERFORMANCE (OTP)	94.0%	93.0%	+1.0%
PASSENGERS PER HOUR	2.28	2.20	+0.08
COST RECOVERY	11.4%	14.0%	-2.6%

Current year
 KPI