

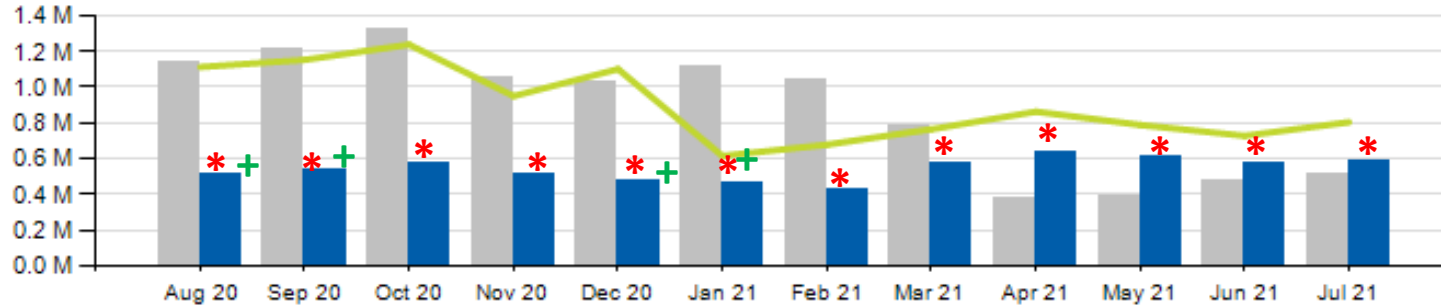


July 2021 Ridership Report



Local/Express Ridership

Total Ridership



	ACTUAL	BUDGET	VARIANCE (%/#)		2020	VARIANCE (%/#)	
TOTAL	585,541	804,603	-27.2%	-219,062	517,128	13.2%	+68,413
LOCAL	564,530	739,211	-23.6%	174,681-	504,091	12.0%	+60,439
EXPRESS	21,011	65,392	-67.9%	44,381-	13,031	61.2%	+7,980
YTD TOTAL	3,877,716	5,245,225	-26.1%	-1,367,509	4,690,733	-17.3%	-813,017

+No School Service Provided in August/September/December/January

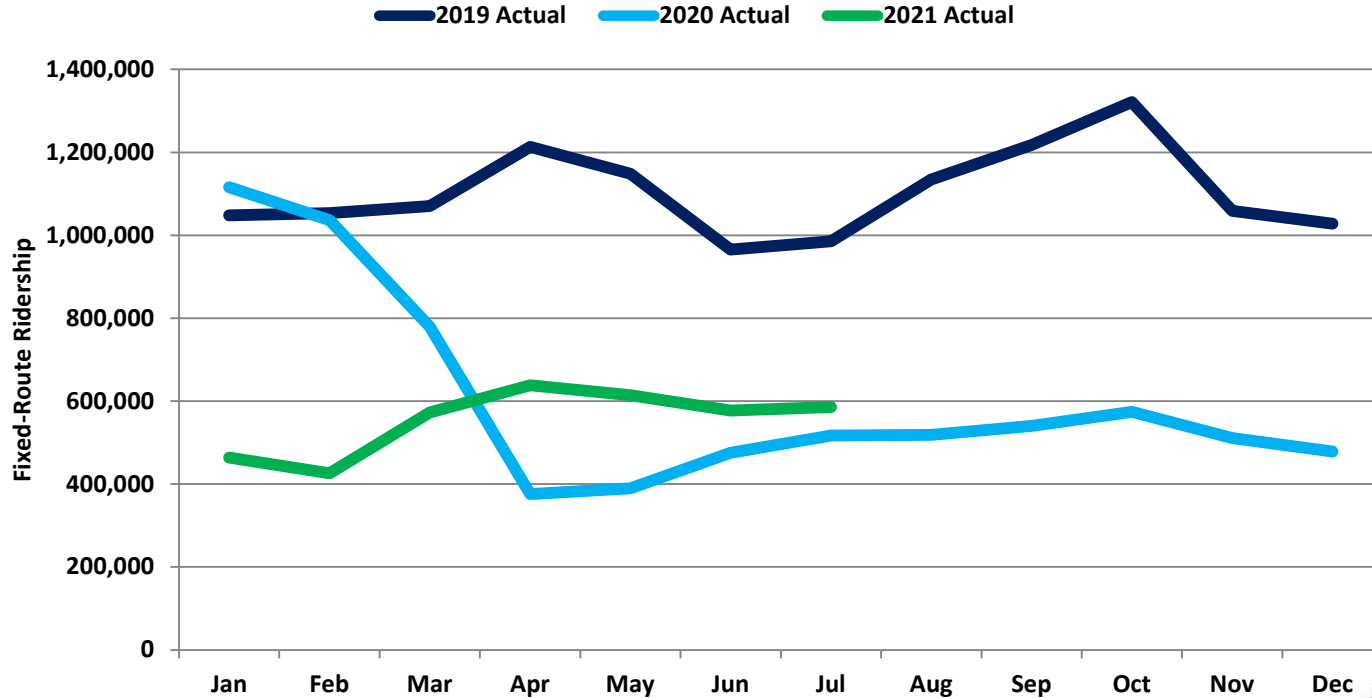
*COVID-19 Impact

■ Current Year
 ■ Prior Year
 — Budget



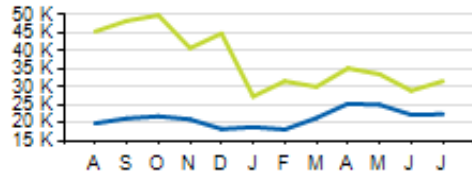
Local/Express Ridership

Monthly Fixed-Route Ridership 2019 - Present

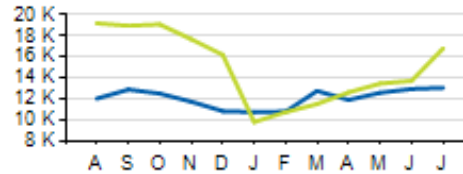


Local/Express KPIs

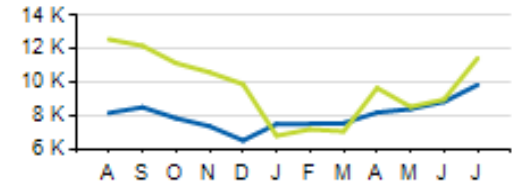
Average Fixed Ridership: Weekday



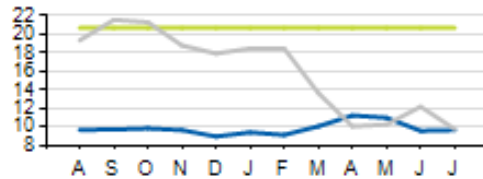
Average Fixed Ridership: Saturday



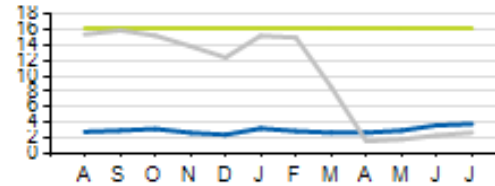
Average Fixed Ridership: Sunday



Passengers per Hour: Local



Passengers per Trip: Express



	ACTUAL	KPI/BUDGET	VARIANCE
PASSENGERS PER HOUR (LOCAL)	9.8	20.7	-10.9
PASSENGERS PER TRIP (EXPRESS)	3.8	16.2	-12.4
AVERAGE RIDERSHIP (WD)	22,427	31,586	-9,159
AVERAGE RIDERSHIP (SA)	13,059	16,806	-3,747
AVERAGE RIDERSHIP (SU)	9,854	11,452	-1,598

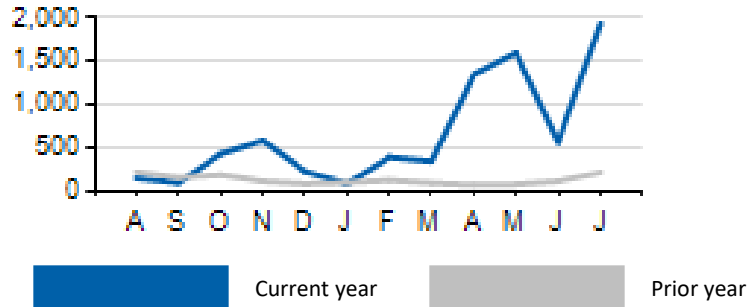
Current year

Prior year

KPI/Budget

Local/Express Missed Trips

Missed Trips



	ACTUAL	TOTAL TRIPS	% OF TRIPS OPERATED
MISSED TRIPS (ALL SERVICE)	1,943	66,114	97.1%

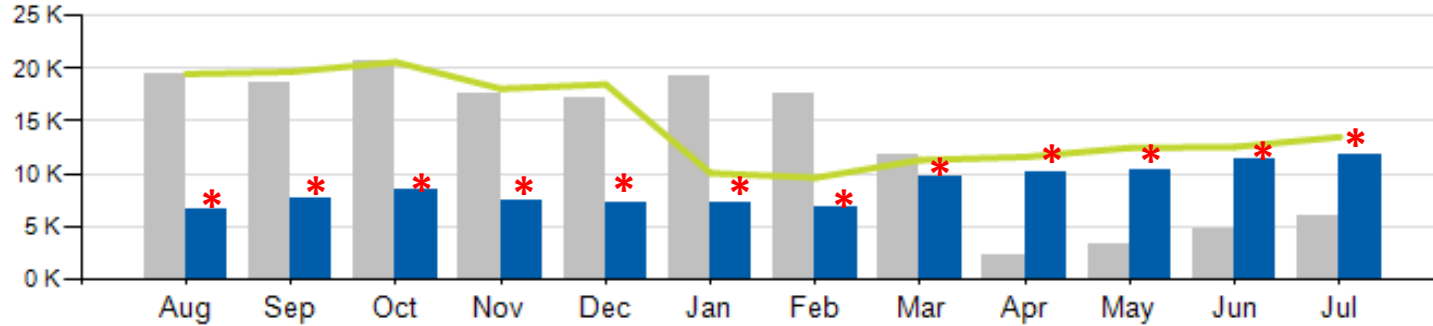
REASON FOR MISSED TRIP	ACTUAL	% of MISSED TRIPS
NO OPERATOR AVAILABLE	1,833	94.3%
MECHANICAL ISSUE	0	0.0%
TRAFFIC INCIDENT	19	0.9%
LATE OPERATIONS	20	0.1%
OTHER	71	0.4%



Access Ridership

Access Ridership

Total Ridership



ACCESS PARATRANSIT	ACTUAL	BUDGET	VARIANCE (%/#)		2020	VARIANCE (%/#)	
TOTAL	11,703	13,498	-13.3%	-1,795	6,033	94.0%	+5,670
WD	10,766				5,521	95.0%	+5,245
SA	517				214	141.6%	+493
SU	420				298	40.9%	+122
YTD	67,255	81,190	-17.2%	-13,935	64,963	3.5%	+2,292



*COVID-19 Impact

Access Ridership

Monthly Paratransit Ridership 2019 - Present

