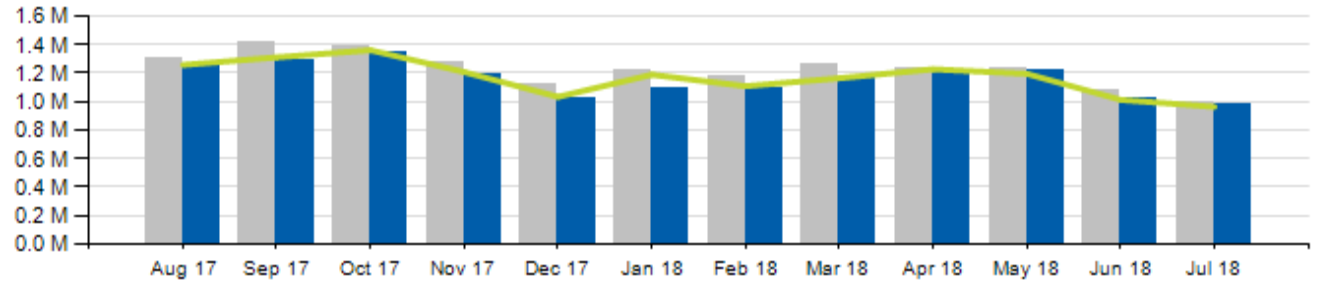




# July 2018 Ridership Report

# Local/Express Ridership

Total Ridership

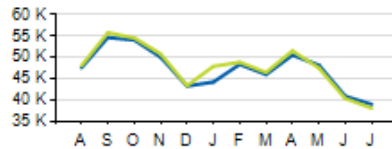


	ACTUAL	BUDGET	VARIANCE (% / #)		2017	VARIANCE (% / #)	
<b>TOTAL</b>	<b>985,707</b>	<b>962,754</b>	<b>+2.4%</b>	<b>+22,953</b>	<b>991,550</b>	<b>-0.6%</b>	<b>-5,483</b>
<b>LOCAL</b>	<b>905,485</b>	<b>883,218</b>	<b>+2.5%</b>	<b>+22,267</b>	<b>913,164</b>	<b>-0.8%</b>	<b>-7,679</b>
<b>EXPRESS</b>	<b>80,222</b>	<b>79,536</b>	<b>+0.9%</b>	<b>+686</b>	<b>78,386</b>	<b>+2.3%</b>	<b>+1,836</b>
<b>YTD TOTAL</b>	<b>7,773,855</b>	<b>7,855,430</b>	<b>-1.0%</b>	<b>-81,575</b>	<b>8,176,307</b>	<b>-4.9%</b>	<b>-402,452</b>

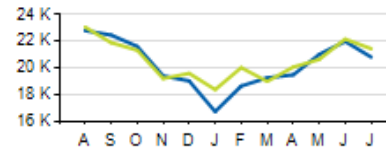


# Local/Express KPIs

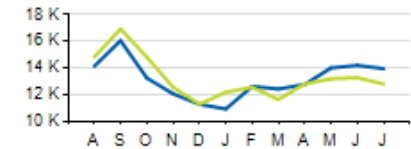
Average Fixed Ridership: Weekday



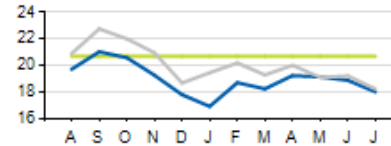
Average Fixed Ridership: Saturday



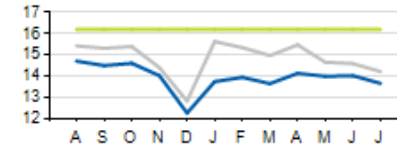
Average Fixed Ridership: Sunday



Passengers per Hour: Local



Passengers per Trip: Express



	ACTUAL	KPI/Budget	VARIANCE
<b>PASSENGERS PER HOUR (LOCAL)</b>	<b>18.0</b>	<b>20.7</b>	<b>-2.7</b>
<b>PASSENGERS PER TRIP (EXPRESS)</b>	<b>13.7</b>	<b>16.2</b>	<b>-2.5</b>
<b>AVERAGE RIDERSHIP (WD)</b>	<b>38,986</b>	<b>38,100</b>	<b>+886</b>
<b>AVERAGE RIDERSHIP (SA)</b>	<b>20,822</b>	<b>21,453</b>	<b>-631</b>
<b>AVERAGE RIDERSHIP (SU)</b>	<b>13,952</b>	<b>12,807</b>	<b>+1,145</b>



Current year



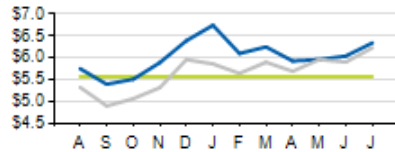
Prior year



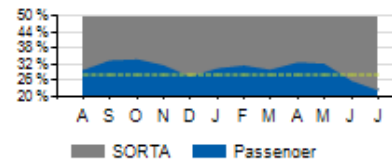
KPI/Budget

# Local/Express KPIs

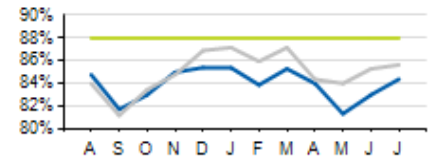
Cost per Passenger: Local



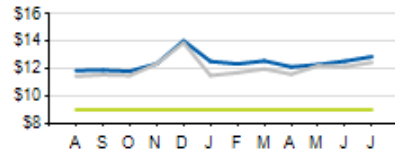
Service Cost Sharing: Local



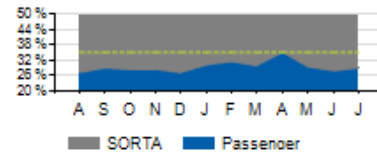
On-Time Performance: Local



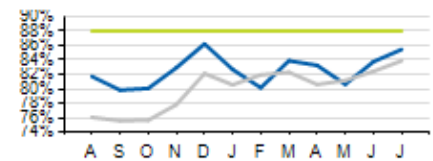
Cost per Passenger: Express



Service Cost Sharing: Express



On-Time Performance: Express



	ACTUAL	KPI	VARIANCE
<b>COST PER PASSENGER (LOCAL)</b>	<b>\$6.34</b>	<b>\$5.57</b>	<b>+\$0.77</b>
<b>COST PER PASSENGER (EXPRESS)</b>	<b>\$12.88</b>	<b>\$9.00</b>	<b>+\$3.88</b>
<b>COST RECOVERY (LOCAL)</b>	<b>22.5%</b>	<b>28.0%</b>	<b>-5.5%</b>
<b>COST RECOVERY (EXPRESS)</b>	<b>29.0%</b>	<b>35.0%</b>	<b>-6.0%</b>
<b>OTP (LOCAL)</b>	<b>84.3%</b>	<b>88.0%</b>	<b>-3.7%</b>
<b>OTP (EXPRESS)</b>	<b>85.4%</b>	<b>88.0%</b>	<b>-2.6%</b>

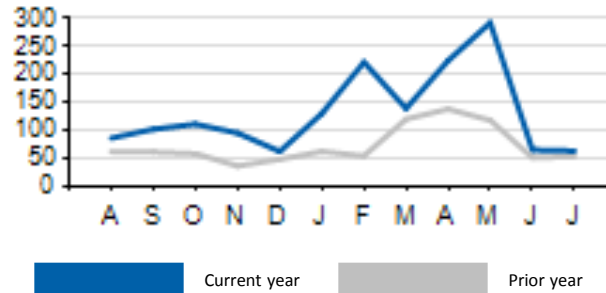
Current year

Prior year

KPI

# Local/Express Missed Trips

Missed Trips



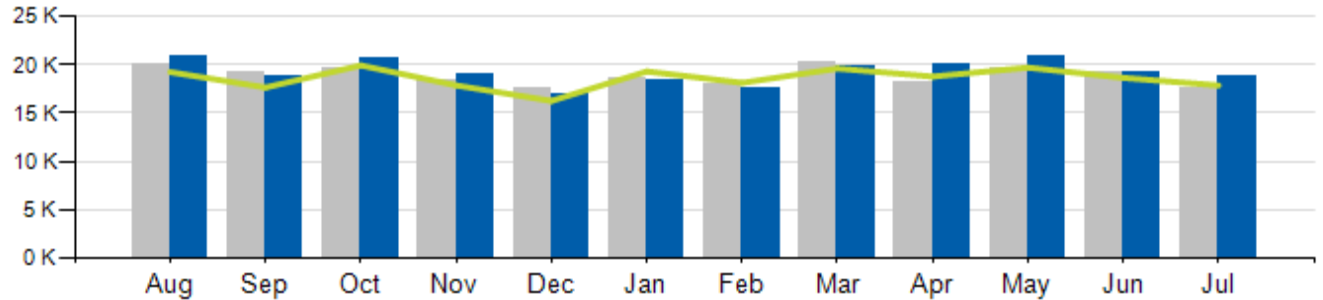
	ACTUAL	TOTAL TRIPS	% of Trips Operated
<b>MISSED TRIPS (ALL SERVICE)</b>	<b>63</b>	<b>59,110</b>	<b>99.9%</b>

REASON FOR MISSED TRIP	ACTUAL	% of MISSED TRIPS
NO OPERATOR AVAILABLE	17	27.0%
MECHANICAL ISSUE	33	52.4%
TRAFFIC INCIDENT	3	4.8%
LATE OPERATIONS	4	6.3%
OTHER	3	4.8%



# Access Ridership

Total Ridership

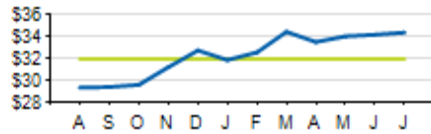


ACCESS PARATRANSIT	ACTUAL	BUDGET	VARIANCE (%/#)		2017	VARIANCE (%/#)	
			%	#		%	#
<b>TOTAL</b>	<b>18,709</b>	<b>17,864</b>	<b>+4.7%</b>	<b>+845</b>	<b>17,502</b>	<b>+6.9%</b>	<b>+1,207</b>
<b>WD</b>	<b>17,187</b>				<b>15,946</b>	<b>+7.8%</b>	<b>+1,241</b>
<b>SA</b>	<b>724</b>				<b>776</b>	<b>-6.7%</b>	<b>-52</b>
<b>SU</b>	<b>798</b>				<b>780</b>	<b>+2.3%</b>	<b>+18</b>
<b>YTD</b>	<b>134,715</b>	<b>132,040</b>	<b>+2.0%</b>	<b>+2,675</b>	<b>131,499</b>	<b>+2.4%</b>	<b>+3,216</b>

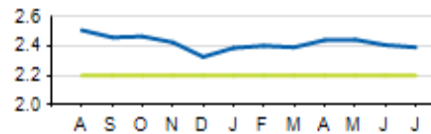


# Access KPIs

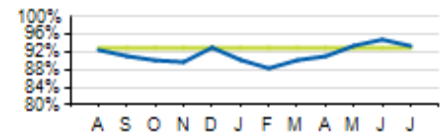
Cost per Passenger



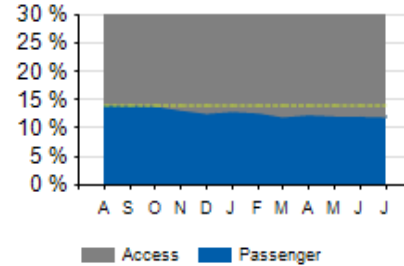
Passengers per Hour



On-Time Performance



Service Cost Sharing



	ACTUAL	KPI	VARIANCE
<b>COST PER PASSENGER</b>	<b>\$34.41</b>	<b>\$32.00</b>	<b>+\$2.41</b>
<b>ON-TIME PERFORMANCE (OTP)</b>	<b>93.4%</b>	<b>93.0%</b>	<b>+0.4%</b>
<b>PASSENGERS PER HOUR</b>	<b>2.4</b>	<b>2.2</b>	<b>+0.2</b>
<b>COST RECOVERY</b>	<b>12.0%</b>	<b>14.0%</b>	<b>-2.0%</b>

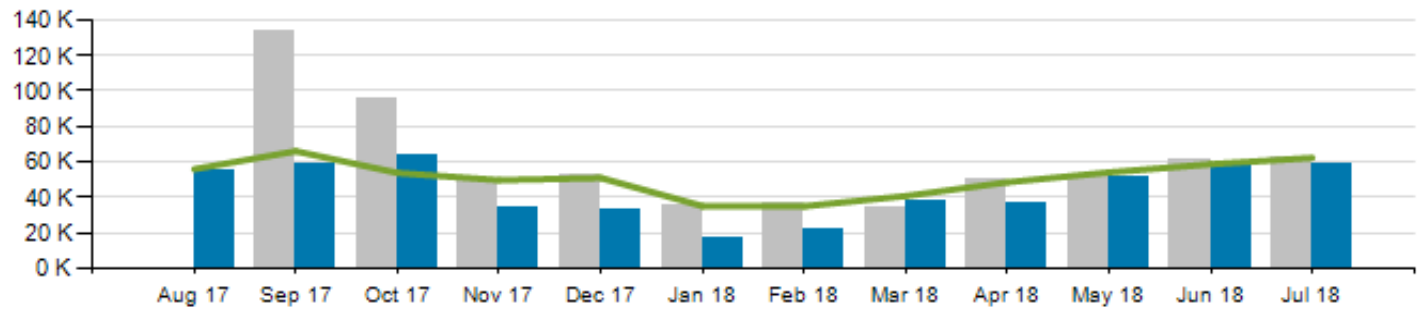
Current year
  KPI





# CB Connector Ridership

Total Ridership

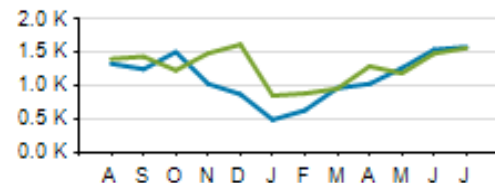


	ACTUAL	BUDGET	VARIANCE (%/#)		FY2017	Variance (%/#)	
<b>TOTAL</b>	<b>58,428</b>	<b>62,371</b>	<b>-6.3%</b>	<b>-3,943</b>	<b>62,916</b>	<b>-7.1%</b>	<b>-4,488</b>
<b>FYTD TOTAL</b>	<b>58,428</b>	<b>62,371</b>	<b>-6.3%</b>	<b>-3,943</b>	<b>62,916</b>	<b>-7.1%</b>	<b>-4,488</b>

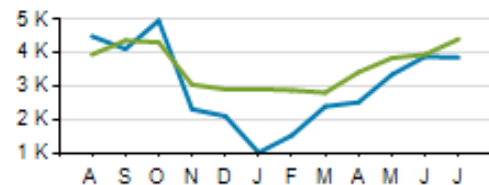
■ Current Year   
 ■ Prior Year   
 — Budget

# CB Connector KPIs

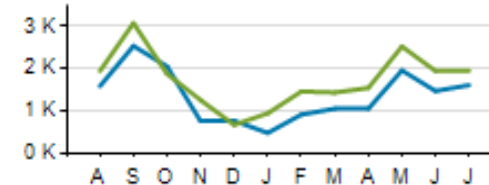
Average Ridership: Weekday



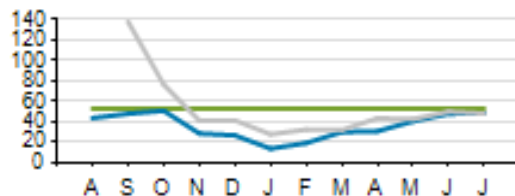
Average Ridership: Saturday



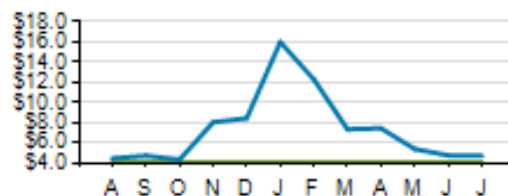
Average Ridership: Sunday



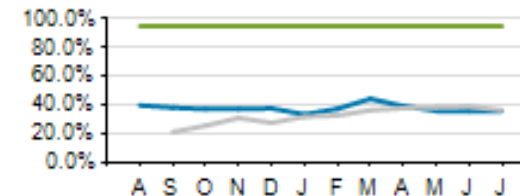
Passengers per Hour



Cost per Passenger



On-Time Performance



	ACTUAL	KPI	VARIANCE
<b>COST PER PASSENGER</b>	\$4.72	\$4.10	+\$0.62
<b>AVERAGE HEADWAY (PEAK/OFF-PEAK)</b>	13:11/15:49	12:00/15:00	+1:11/+0:49
<b>PASSENGERS PER HOUR</b>	48.5	52.8	-4.3
<b>COST RECOVERY</b>	14.3%	14.3%	-