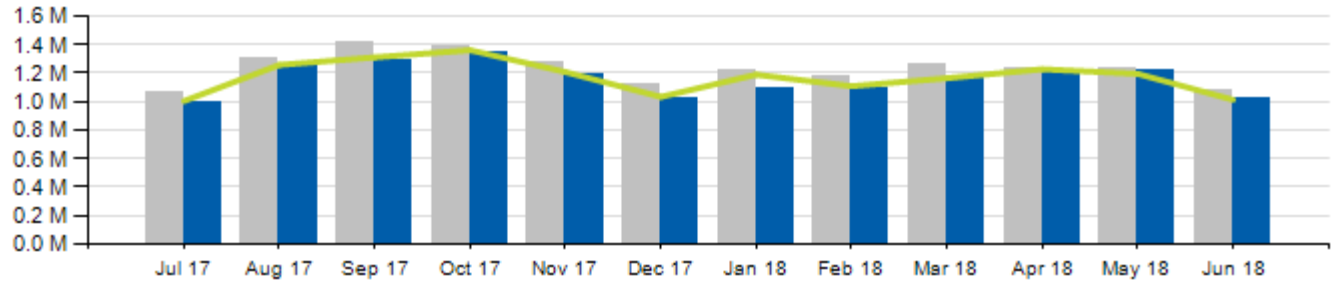


June 2018 Ridership Report



Local/Express Ridership

Total Ridership

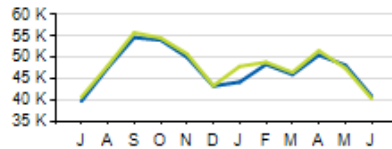


	ACTUAL	BUDGET	VARIANCE (% / #)		2017	VARIANCE (% / #)	
TOTAL	1,025,480	1,012,043	+1.3%	+13,437	1,074,204	-4.5%	-48,724
LOCAL	943,333	929,841	+1.5%	+13,492	986,529	-4.4%	-43,196
EXPRESS	82,147	82,202	-0.1%	-55	87,675	-6.3%	-5,528
YTD TOTAL	6,787,990	6,892,676	-1.5%	-104,686	7,184,757	-5.5%	-396,767

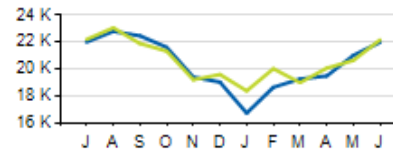


Local/Express KPIs

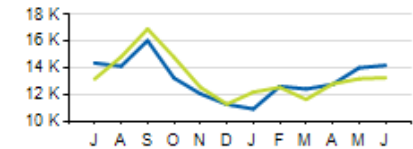
Average Fixed Ridership: Weekday



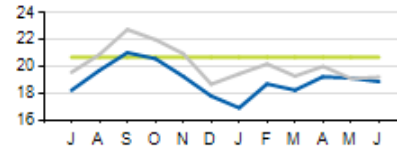
Average Fixed Ridership: Saturday



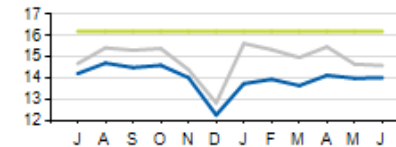
Average Fixed Ridership: Sunday



Passengers per Hour: Local



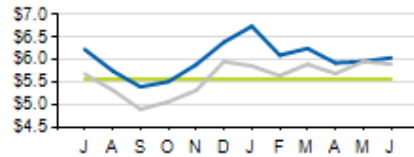
Passengers per Trip: Express



	ACTUAL	KPI/BUDGET	VARIANCE
PASSENGERS PER HOUR (LOCAL)	18.9	20.7	-1.8
PASSENGERS PER TRIP (EXPRESS)	14.0	16.2	-2.2
AVERAGE RIDERSHIP (WD)	40,896	40,385	+511
AVERAGE RIDERSHIP (SA)	22,003	22,174	-171
AVERAGE RIDERSHIP (SU)	14,200	13,272	+928

Local/Express KPIs

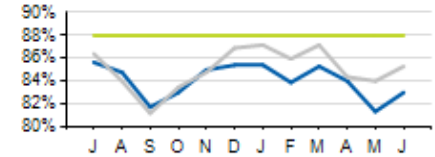
Cost per Passenger: Local



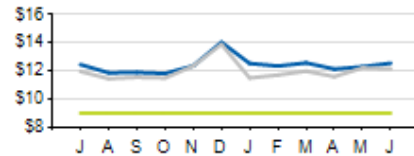
Service Cost Sharing: Local



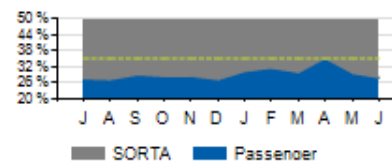
On-Time Performance: Local



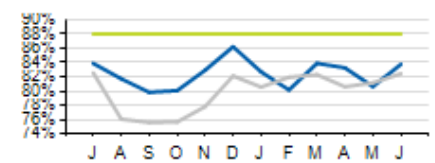
Cost per Passenger: Express



Service Cost Sharing: Express



On-Time Performance: Express



	ACTUAL	KPI	VARIANCE
COST PER PASSENGER (LOCAL)	\$6.04	\$5.57	+\$0.47
COST PER PASSENGER (EXPRESS)	\$12.55	\$9.00	+\$3.55
COST RECOVERY (LOCAL)	26.0%	28.0%	-2.0%
COST RECOVERY (EXPRESS)	27.9%	35.0%	-7.1%
OTP (LOCAL)	83.0%	88.0%	-5.0%
OTP (EXPRESS)	83.7%	88.0%	-4.3%

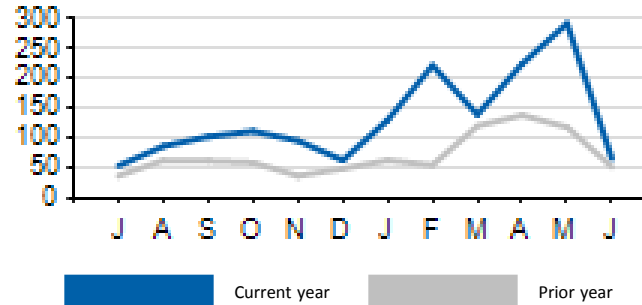
Current year

Prior year

KPI

Local/Express Missed Trips

Missed Trips

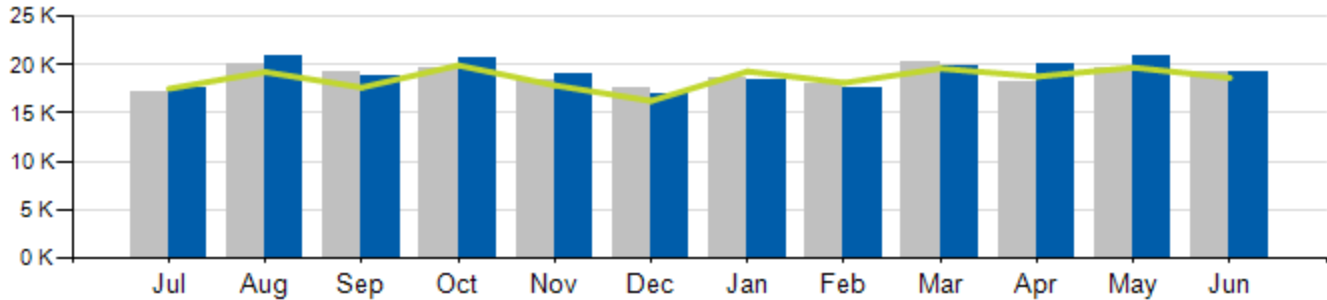


	ACTUAL	TOTAL TRIPS	% of Trips Operated
MISSIED TRIPS (ALL SERVICE)	65	58,666	99.96%

REASON FOR MISSED TRIP	ACTUAL	% of MISSED TRIPS
NO OPERATOR AVAILABLE	10	15.4%
MECHANICAL ISSUE	27	41.5%
TRAFFIC INCIDENT	7	10.8%
LATE OPERATIONS	16	24.6%
OTHER	5	7.7%

Access Ridership

Total Ridership

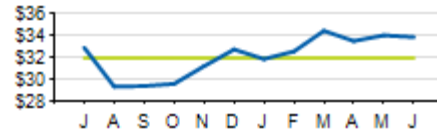


ACCESS PARATRANSIT	ACTUAL	BUDGET	VARIANCE (%/#)		2017	VARIANCE (%/#)	
TOTAL	19,167	18,650	+2.8%	+514	19,318	-0.8%	-151
WD	17,715				18,084	-2.0%	-369
SA	844				714	+18.2%	+130
SU	608				520	+17.0%	+88
YTD	118,006	114,176	+3.3%	+3,830	113,997	+3.5%	+4,009

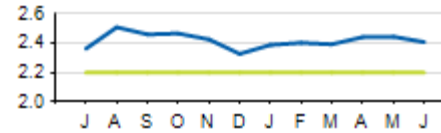


Access KPIs

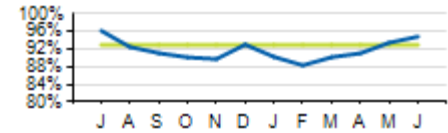
Cost per Passenger



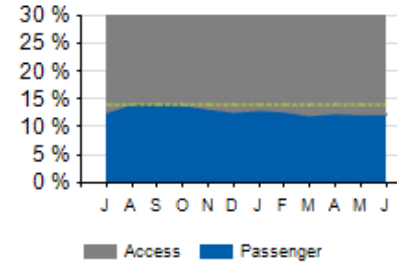
Passengers per Hour



On-Time Performance



Service Cost Sharing



	ACTUAL	KPI	VARIANCE
COST PER PASSENGER	\$33.91	\$32.00	+\$1.91
ON-TIME PERFORMANCE (OTP)	94.9%	93.0%	+1.9%
PASSENGERS PER HOUR	2.4	2.2	+0.2
COST RECOVERY	12.2%	14.0%	-1.8%