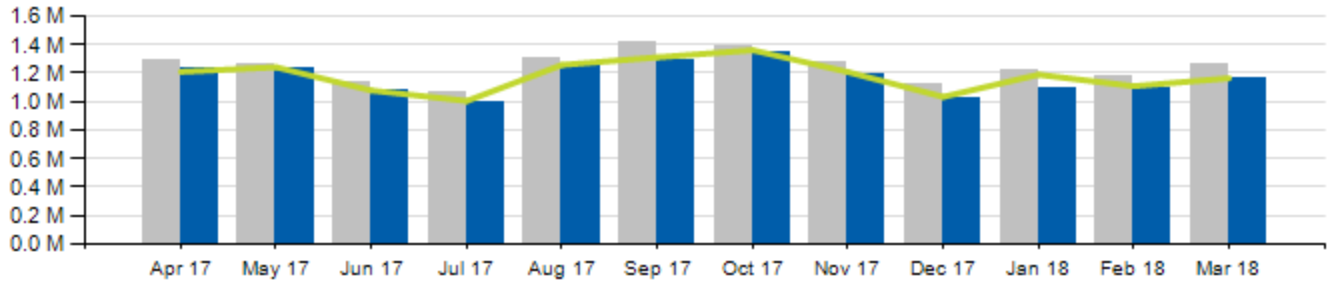


# Local/Express Ridership

Total Ridership

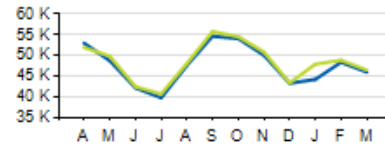


	ACTUAL	BUDGET	VARIANCE (% / #)		2017	VARIANCE (% / #)	
<b>TOTAL</b>	<b>1,157,816</b>	<b>1,163,990</b>	<b>-0.5%</b>	<b>-6,174</b>	<b>1,257,466</b>	<b>-8.6%</b>	<b>-99,650</b>
<b>LOCAL</b>	<b>1,080,061</b>	<b>1,083,058</b>	<b>-0.3%</b>	<b>-2,997</b>	<b>1,170,011</b>	<b>-7.7%</b>	<b>-89,950</b>
<b>EXPRESS</b>	<b>77,755</b>	<b>80,932</b>	<b>-3.9%</b>	<b>-3,177</b>	<b>87,455</b>	<b>-11.1%</b>	<b>-9,700</b>
<b>YTD TOTAL</b>	<b>3,344,689</b>	<b>3,459,836</b>	<b>-3.3%</b>	<b>-115,147</b>	<b>3,654,414</b>	<b>-8.5%</b>	<b>-309,725</b>

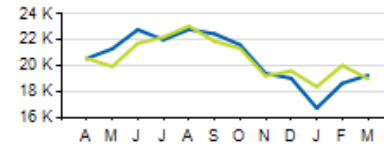


# Local/Express KPIs

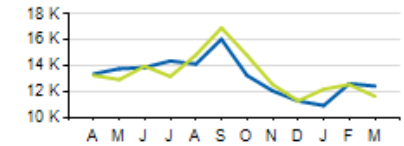
Average Fixed Ridership: Weekday



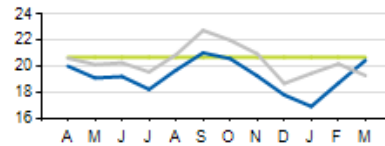
Average Fixed Ridership: Saturday



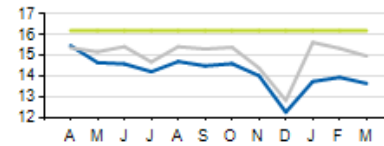
Average Fixed Ridership: Sunday



Passengers per Hour: Local



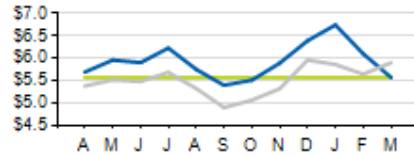
Passengers per Trip: Express



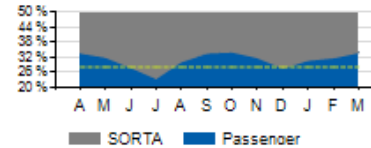
	ACTUAL	KPI/BUDGET	VARIANCE
<b>PASSENGERS PER HOUR (LOCAL)</b>	<b>20.4</b>	<b>20.7</b>	<b>-0.3</b>
<b>PASSENGERS PER TRIP (EXPRESS)</b>	<b>13.6</b>	<b>16.2</b>	<b>-2.6</b>
<b>AVERAGE RIDERSHIP (WD)</b>	<b>45,988</b>	<b>46,474</b>	<b>-486</b>
<b>AVERAGE RIDERSHIP (SA)</b>	<b>19,269</b>	<b>18,996</b>	<b>+273</b>
<b>AVERAGE RIDERSHIP (SU)</b>	<b>12,427</b>	<b>11,644</b>	<b>+783</b>

# Local/Express KPIs

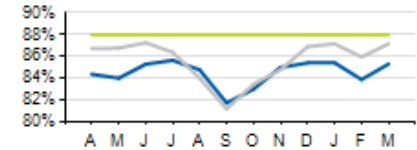
Cost per Passenger: Local



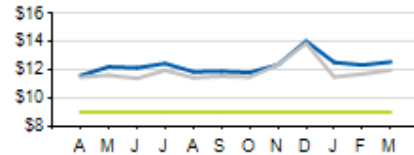
Service Cost Sharing: Local



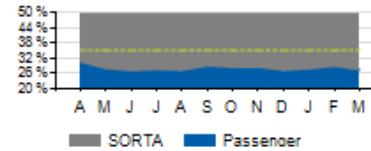
On-Time Performance: Local



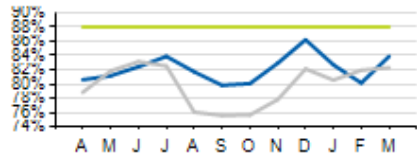
Cost per Passenger: Express



Service Cost Sharing: Express



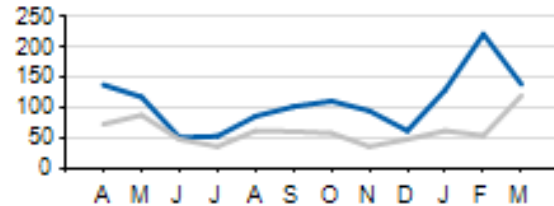
On-Time Performance: Express



	ACTUAL	KPI	VARIANCE
<b>COST PER PASSENGER (LOCAL)</b>	<b>\$5.56</b>	<b>\$5.57</b>	<b>-\$0.01</b>
<b>COST PER PASSENGER (EXPRESS)</b>	<b>\$12.57</b>	<b>\$9.00</b>	<b>+\$3.57</b>
<b>COST RECOVERY (LOCAL)</b>	<b>33.9%</b>	<b>28.0%</b>	<b>+5.9%</b>
<b>COST RECOVERY (EXPRESS)</b>	<b>27.5%</b>	<b>35.0%</b>	<b>-7.5%</b>
<b>OTP (LOCAL)</b>	<b>85.2%</b>	<b>88.0%</b>	<b>-2.8%</b>
<b>OTP (EXPRESS)</b>	<b>83.9%</b>	<b>88.0%</b>	<b>-4.1%</b>

# Local/Express Missed Trips

Missed Trips



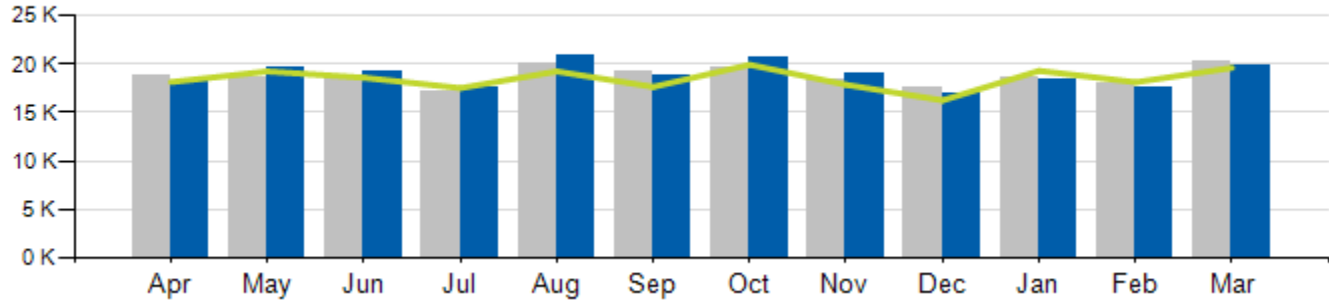
Current year      Prior year

	ACTUAL	TOTAL TRIPS	% of Trips Operated
<b>MISSED TRIPS (ALL SERVICE)</b>	<b>139</b>	<b>61,202</b>	<b>99.77%</b>

REASON FOR MISSED TRIP	ACTUAL	% of MISSED TRIPS
OPERATOR SHORTAGE	73	52.5%
MECHANICAL ISSUE	23	16.5%
TRAFFIC INCIDENT	12	8.6%
LATE OPERATIONS	16	11.5%
OTHER	15	10.8%

# Access Ridership

Total Ridership

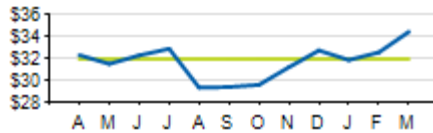


ACCESS PARATRANSIT	ACTUAL	BUDGET	VARIANCE (%/#)		2017	VARIANCE (%/#)	
			%	#		%	#
<b>TOTAL</b>	<b>19,869</b>	<b>19,611</b>	<b>+1.3%</b>	<b>+258</b>	<b>20,279</b>	<b>-2.0%</b>	<b>-410</b>
<b>WD</b>	<b>18,395</b>				<b>19,012</b>	<b>-3.2%</b>	<b>-617</b>
<b>SA</b>	<b>950</b>				<b>762</b>	<b>+24.7%</b>	<b>+188</b>
<b>SU</b>	<b>524</b>				<b>505</b>	<b>+3.8%</b>	<b>+19</b>
<b>YTD</b>	<b>56,006</b>	<b>57,047</b>	<b>-1.8%</b>	<b>-1,041</b>	<b>56,875</b>	<b>-1.5%</b>	<b>-869</b>

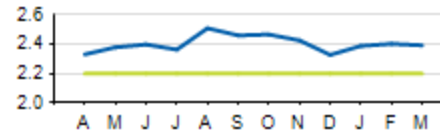


# Access KPIs

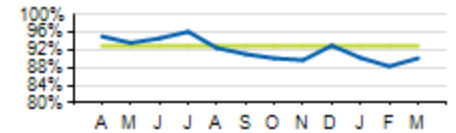
Cost per Passenger



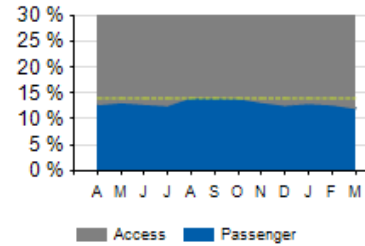
Passengers per Hour



On-Time Performance



Service Cost Sharing



	ACTUAL	KPI	VARIANCE
<b>COST PER PASSENGER</b>	<b>\$34.47</b>	<b>\$32.00</b>	<b>+\$2.47</b>
<b>ON-TIME PERFORMANCE (OTP)</b>	<b>90.2%</b>	<b>93.0%</b>	<b>-2.8%</b>
<b>PASSENGERS PER HOUR</b>	<b>2.4</b>	<b>2.2</b>	<b>+0.2</b>
<b>COST RECOVERY</b>	<b>12.0%</b>	<b>14.0%</b>	<b>-2.0%</b>