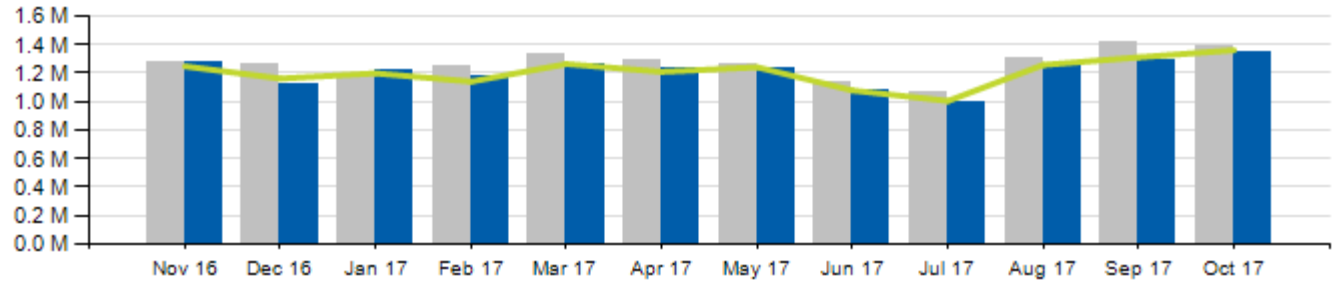


# October 2017 Ridership Report



# Local/Express Ridership

Total Ridership

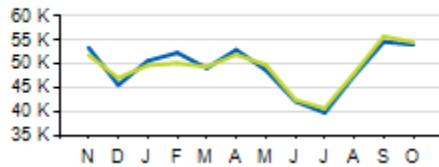


	ACTUAL	BUDGET	VARIANCE (% / #)		2016	VARIANCE (% / #)	
<b>TOTAL</b>	<b>1,342,480</b>	<b>1,359,795</b>	<b>-1.3%</b>	<b>-17,315</b>	<b>1,392,511</b>	<b>-3.6%</b>	<b>-50,031</b>
<b>LOCAL</b>	<b>1,258,448</b>	<b>1,275,361</b>	<b>-1.3%</b>	<b>-16,913</b>	<b>1,307,834</b>	<b>-3.8%</b>	<b>-49,386</b>
<b>EXPRESS</b>	<b>84,032</b>	<b>84,434</b>	<b>-0.5%</b>	<b>-402</b>	<b>84,677</b>	<b>-0.8%</b>	<b>-645</b>
<b>YTD TOTAL</b>	<b>12,047,431</b>	<b>12,057,649</b>	<b>-0.1%</b>	<b>-10,218</b>	<b>12,624,790</b>	<b>-4.6%</b>	<b>-577,359</b>

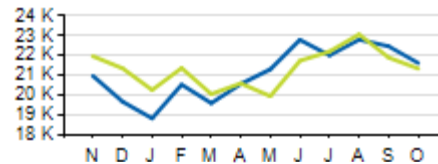


# Local/Express KPIs

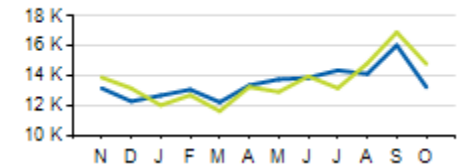
Average Fixed Ridership: Weekday



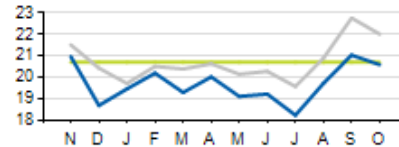
Average Fixed Ridership: Saturday



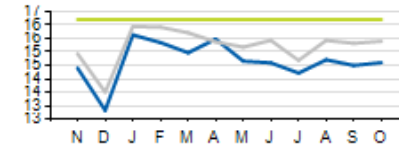
Average Fixed Ridership: Sunday



Passengers per Hour: Local



Passengers per Trip: Express



	ACTUAL	KPI	VARIANCE
<b>PASSENGERS PER HOUR (LOCAL)</b>	<b>20.5</b>	<b>20.7</b>	<b>-0.2</b>
<b>PASSENGERS PER TRIP (EXPRESS)</b>	<b>14.6</b>	<b>16.2</b>	<b>-1.6</b>
<b>AVERAGE RIDERSHIP (WD)</b>	<b>54,077</b>	<b>54,561</b>	<b>-484</b>
<b>AVERAGE RIDERSHIP (SA)</b>	<b>21,628</b>	<b>21,345</b>	<b>+283</b>
<b>AVERAGE RIDERSHIP (SU)</b>	<b>13,252</b>	<b>14,812</b>	<b>-1,660</b>

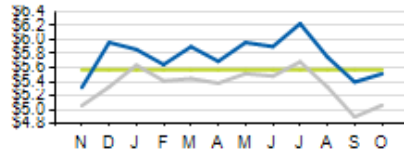
Current year

Prior year

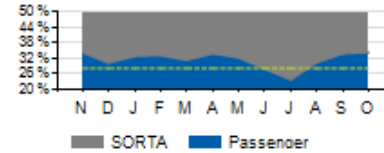
Budget/KPI

# Local/Express KPIs

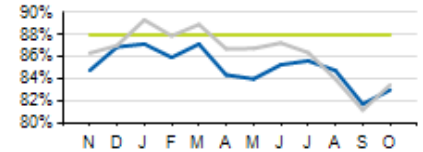
Cost per Passenger: Local



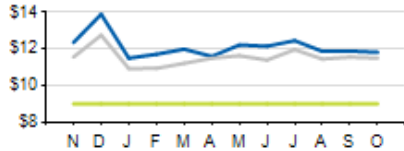
Service Cost Sharing: Local



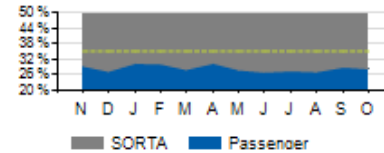
On-Time Performance: Local



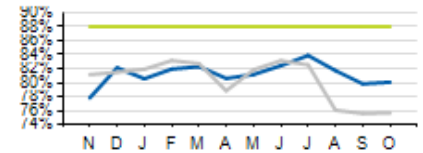
Cost per Passenger: Express



Service Cost Sharing: Express



On-Time Performance: Express



	ACTUAL	KPI	VARIANCE
<b>COST PER PASSENGER (LOCAL)</b>	<b>\$5.51</b>	<b>\$5.57</b>	<b>-\$0.06</b>
<b>COST PER PASSENGER (EXPRESS)</b>	<b>\$11.82</b>	<b>\$9.00</b>	<b>+\$2.82</b>
<b>COST RECOVERY (LOCAL)</b>	<b>33.9%</b>	<b>28.0%</b>	<b>+5.9%</b>
<b>COST RECOVERY (EXPRESS)</b>	<b>28.3%</b>	<b>35.0%</b>	<b>-6.7%</b>
<b>OTP (LOCAL)</b>	<b>82.9%</b>	<b>88.0%</b>	<b>-5.1%</b>
<b>OTP (EXPRESS)</b>	<b>80.0%</b>	<b>88.0%</b>	<b>-8.0%</b>

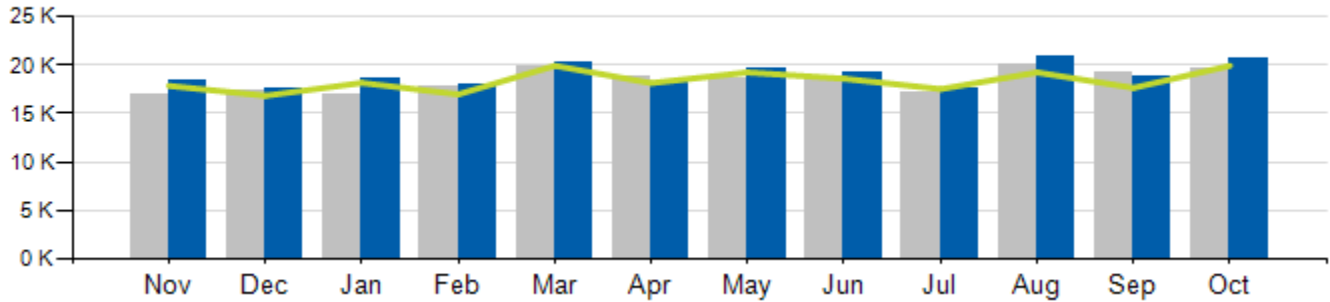
Current year

Prior year

KPI

# Access Ridership

Total Ridership

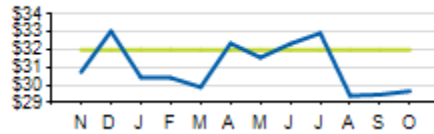


ACCESS PARATRANSIT	ACTUAL	BUDGET	VARIANCE (%/#)		2016	VARIANCE (%/#)	
<b>TOTAL</b>	<b>20,614</b>	<b>19,934</b>	<b>+3.4%</b>	<b>+680</b>	<b>19,640</b>	<b>+5%</b>	<b>+974</b>
<b>WD</b>	<b>19,181</b>				<b>18,006</b>	<b>+6.5%</b>	<b>+1,175</b>
<b>SA</b>	<b>766</b>				<b>965</b>	<b>-20.6%</b>	<b>-199</b>
<b>SU</b>	<b>667</b>				<b>669</b>	<b>-0.3%</b>	<b>-2</b>
<b>YTD</b>	<b>191,894</b>	<b>185,405</b>	<b>+3.5%</b>	<b>+6,489</b>	<b>186,758</b>	<b>+2.8%</b>	<b>+5,136</b>

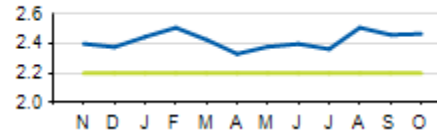


# Access KPIs

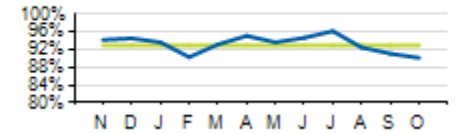
Cost per Passenger



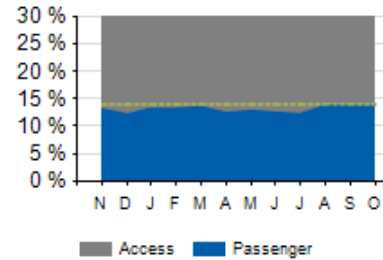
Passengers per Hour



On-Time Performance



Service Cost Sharing



	ACTUAL	KPI	VARIANCE
<b>COST PER PASSENGER</b>	<b>\$29.60</b>	<b>\$32.00</b>	<b>-\$2.40</b>
<b>ON-TIME PERFORMANCE (OTP)</b>	<b>90.1%</b>	<b>93.0%</b>	<b>-2.9%</b>
<b>PASSENGERS PER HOUR</b>	<b>2.4</b>	<b>2.2</b>	<b>+0.2</b>
<b>COST RECOVERY</b>	<b>16.2%</b>	<b>14.0%</b>	<b>+2.2</b>