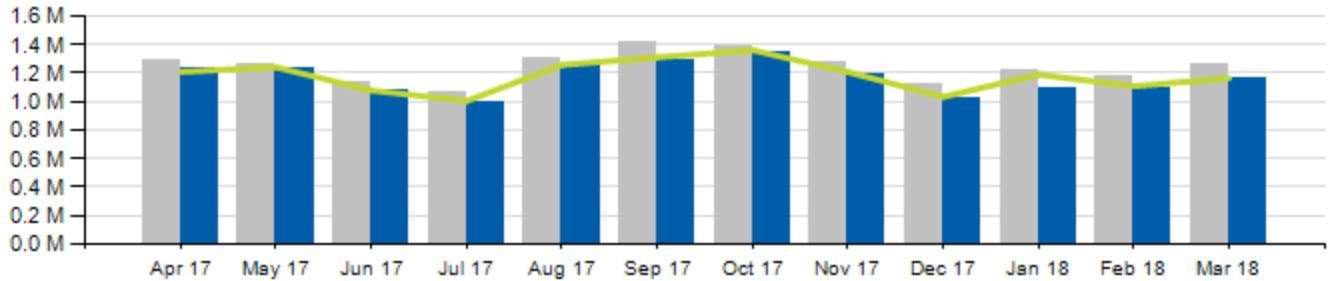


March 2018 Ridership Report



Local/Express Ridership

Total Ridership

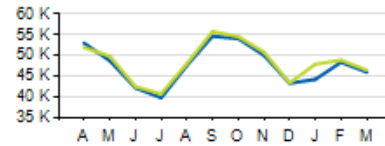


	ACTUAL	BUDGET	VARIANCE (% / #)		2017	VARIANCE (% / #)	
TOTAL	1,157,816	1,163,990	-0.5%	-6,174	1,257,466	-8.6%	-99,650
LOCAL	1,080,061	1,083,058	-0.3%	-2,997	1,170,011	-7.7%	-89,950
EXPRESS	77,755	80,932	-3.9%	-3,177	87,455	-11.1%	-9,700
YTD TOTAL	3,344,689	3,459,836	-3.3%	-115,147	3,654,414	-8.5%	-309,725

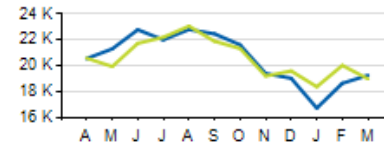


Local/Express KPIs

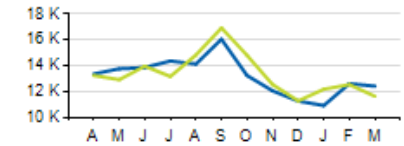
Average Fixed Ridership: Weekday



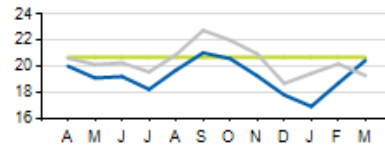
Average Fixed Ridership: Saturday



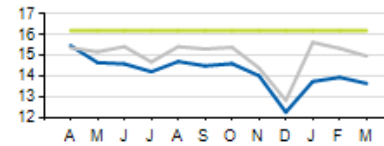
Average Fixed Ridership: Sunday



Passengers per Hour: Local



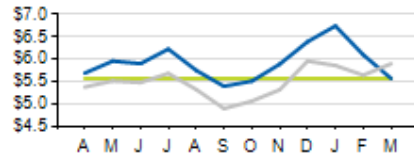
Passengers per Trip: Express



	ACTUAL	KPI/BUDGET	VARIANCE
PASSENGERS PER HOUR (LOCAL)	20.4	20.7	-0.3
PASSENGERS PER TRIP (EXPRESS)	13.6	16.2	-2.6
AVERAGE RIDERSHIP (WD)	45,988	46,474	-486
AVERAGE RIDERSHIP (SA)	19,269	18,996	+273
AVERAGE RIDERSHIP (SU)	12,427	11,644	+783

Local/Express KPIs

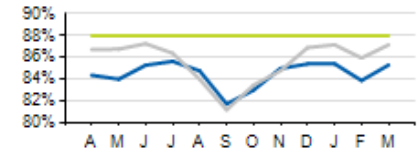
Cost per Passenger: Local



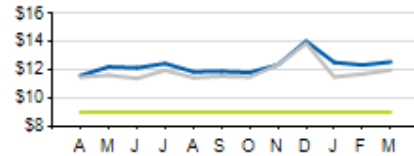
Service Cost Sharing: Local



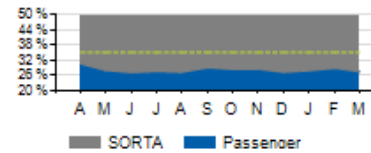
On-Time Performance: Local



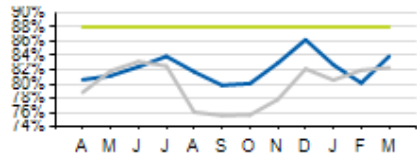
Cost per Passenger: Express



Service Cost Sharing: Express



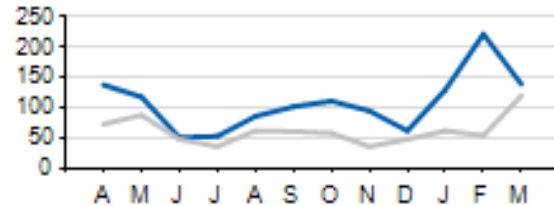
On-Time Performance: Express



	ACTUAL	KPI	VARIANCE
COST PER PASSENGER (LOCAL)	\$5.56	\$5.57	-\$0.01
COST PER PASSENGER (EXPRESS)	\$12.57	\$9.00	+\$3.57
COST RECOVERY (LOCAL)	33.9%	28.0%	+5.9%
COST RECOVERY (EXPRESS)	27.5%	35.0%	-7.5%
OTP (LOCAL)	85.2%	88.0%	-2.8%
OTP (EXPRESS)	83.9%	88.0%	-4.1%

Local/Express Missed Trips

Missed Trips



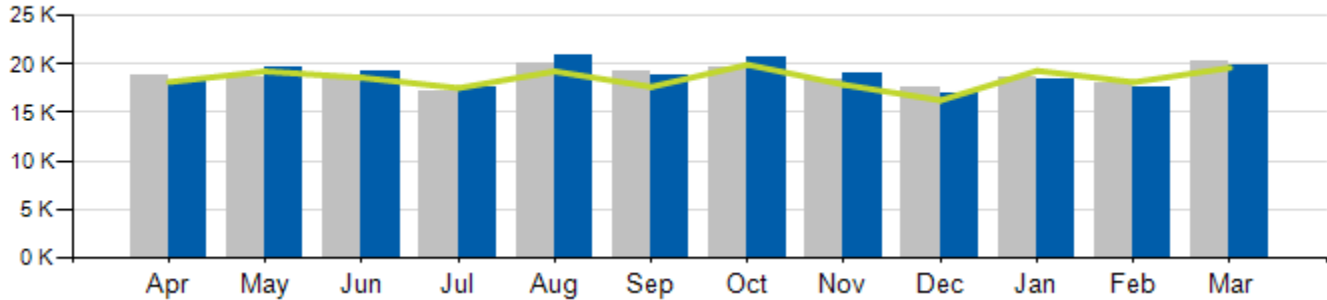
Current year Prior year

	ACTUAL	TOTAL TRIPS	% of Trips Operated
MISSED TRIPS (ALL SERVICE)	139	61,202	99.77%

REASON FOR MISSED TRIP	ACTUAL	% of MISSED TRIPS
OPERATOR SHORTAGE	73	52.5%
MECHANICAL ISSUE	23	16.5%
TRAFFIC INCIDENT	12	8.6%
LATE OPERATIONS	16	11.5%
OTHER	15	10.8%

Access Ridership

Total Ridership

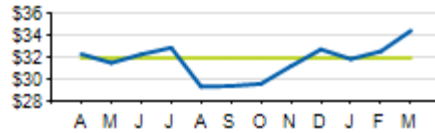


ACCESS PARATRANSIT	ACTUAL	BUDGET	VARIANCE (%/#)		2017	VARIANCE (%/#)	
TOTAL	19,869	19,611	+1.3%	+258	20,279	-2.0%	-410
WD	18,395				19,012	-3.2%	-617
SA	950				762	+24.7%	+188
SU	524				505	+3.8%	+19
YTD	56,006	57,047	-1.8%	-1,041	56,875	-1.5%	-869

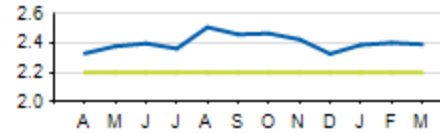


Access KPIs

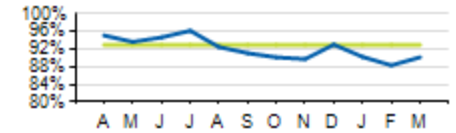
Cost per Passenger



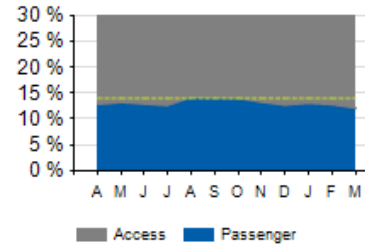
Passengers per Hour



On-Time Performance



Service Cost Sharing



	ACTUAL	KPI	VARIANCE
COST PER PASSENGER	\$34.47	\$32.00	+\$2.47
ON-TIME PERFORMANCE (OTP)	90.2%	93.0%	-2.8%
PASSENGERS PER HOUR	2.4	2.2	+0.2
COST RECOVERY	12.0%	14.0%	-2.0%